

## Summary

<b>Production Name</b>	GABARAP Rabbit Polyclonal Antibody
<b>Description</b>	Rabbit Polyclonal Antibody
<b>Host</b>	Rabbit
<b>Application</b>	WB
<b>Reactivity</b>	Human,Mouse,Rat

## Performance

<b>Conjugation</b>	Unconjugated
<b>Modification</b>	Unmodified
<b>Isotype</b>	IgG
<b>Clonality</b>	Polyclonal
<b>Form</b>	Liquid
<b>Storage</b>	Store at 4°C short term. Aliquot and store at -20°C long term. Avoid freeze/thaw cycles.
<b>Buffer</b>	Liquid in PBS containing 50% glycerol, 0.5% BSA and 0.02% New type preservative N.
<b>Purification</b>	Affinity purification

## Immunogen

<b>Gene Name</b>	GABARAPL2 FLC3A GEF2
<b>Alternative Names</b>	GABA(A) receptor-associated protein-like 2
<b>Gene ID</b>	11345.0
<b>SwissProt ID</b>	P60520.Synthetic Peptide of GABARAP AA range: 26-75

## Application

<b>Dilution Ratio</b>	WB 1:500-2000, ELISA 1:10000-20000
<b>Molecular Weight</b>	17kD

## Background

function:Involved in intra-Golgi traffic. Modulates intra-Golgi transport through coupling between NSF activity and SNAREs activation. It first stimulates the ATPase activity of NSF which in turn stimulates the association with

**Product Name: GABARAP Rabbit Polyclonal Antibody**  
**Catalog #: APRab11244**

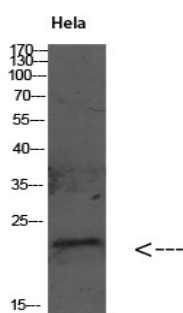


GOSR1.,PTM:Phosphorylated upon DNA damage, probably by ATM or ATR.,similarity:Belongs to the MAP1 LC3 family.,subunit:Monomer. Interacts with GABRG2, NSF, GOSR1 and beta-tubulin (By similarity). Interacts with ULK1.,tissue specificity:Ubiquitous. Expressed at high levels in the brain, heart, prostate, ovary, spleen and skeletal muscle. Expressed at very low levels in lung, thymus and small intestine.,function:Involved in intra-Golgi traffic. Modulates intra-Golgi transport through coupling between NSF activity and SNAREs activation. It first stimulates the ATPase activity of NSF which in turn stimulates the association with GOSR1.,PTM:Phosphorylated upon DNA damage, probably by ATM or ATR.,similarity:Belongs to the MAP1 LC3 family.,subunit:Monomer. Interacts with GABRG2, NSF, GOSR1 and beta-tubulin (By similarity). Interacts with ULK1.,tissue specificity:Ubiquitous. Expressed at high levels in the brain, heart, prostate, ovary, spleen and skeletal muscle. Expressed at very low levels in lung, thymus and small intestine.,

## Research Area

Regulation of autophagy;

## Image Data



Western Blot analysis of various cells using Antibody diluted at 1:1000. Secondary antibody was diluted at 1:20000

## Note

For research use only.