

Summary

Production Name	GABAA Ry1 Rabbit Polyclonal Antibody
Description	Rabbit Polyclonal Antibody
Host	Rabbit
Application	WB
Reactivity	Human,Mouse,Rat

Performance

Conjugation	Unconjugated
Modification	Unmodified
Isotype	IgG
Clonality	Polyclonal
Form	Liquid
Storage	Store at 4°C short term. Aliquot and store at -20°C long term. Avoid freeze/thaw cycles.
Buffer	Liquid in PBS containing 50% glycerol, 0.5% BSA and 0.02% New type preservative N.
Purification	Affinity purification

Immunogen

Gene Name	GABRG1
Alternative Names	GABRG1; Gamma-aminobutyric acid receptor subunit gamma-1; GABA(A) receptor subunit gamma-1
Gene ID	2565.0
SwissProt ID	Q8N1C3.The antiserum was produced against synthesized peptide derived from human GABRG1. AA range:11-60

Application

Dilution Ratio	WB 1:500-1:2000. ELISA: 1:20000.
Molecular Weight	54kD

Background

Product Name: GABAA Ry1 Rabbit Polyclonal Antibody
Catalog #: APRab11238

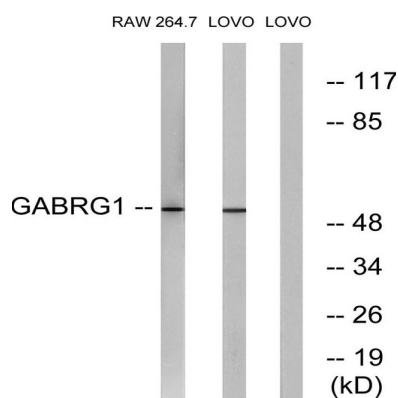


The protein encoded by this gene belongs to the ligand-gated ionic channel family. It is an integral membrane protein and plays an important role in inhibiting neurotransmission by binding to the benzodiazepine receptor and opening an integral chloride channel. This gene is clustered with three other family members on chromosome 4. [provided by RefSeq, Jul 2008],function:GABA, the major inhibitory neurotransmitter in the vertebrate brain, mediates neuronal inhibition by binding to the GABA/benzodiazepine receptor and opening an integral chloride channel.,miscellaneous:This subunit carries the benzodiazepine binding site.,online information:Forbidden fruit - Issue 56 of March 2005,PTM:May be palmitoylated.,similarity:Belongs to the ligand-gated ionic channel (TC 1.A.9) family.,subunit:Generally pentameric. There are five types of GABA(A) receptor chains: alpha, beta, gamma, delta, and rho.,

Research Area

Neuroactive ligand-receptor interaction;

Image Data



Western blot analysis of lysates from LOVO and RAW264.7 cells, using GABRG1 Antibody. The lane on the right is blocked with the synthesized peptide.

Note

For research use only.