

**Product Name: GABAA R $\beta$ 1 Rabbit Polyclonal Antibody**  
**Catalog #: APRab11236**



## Summary

<b>Production Name</b>	GABAA R $\beta$ 1 Rabbit Polyclonal Antibody
<b>Description</b>	Rabbit Polyclonal Antibody
<b>Host</b>	Rabbit
<b>Application</b>	IHC,ELISA
<b>Reactivity</b>	Human,Mouse,Rat

## Performance

<b>Conjugation</b>	Unconjugated
<b>Modification</b>	Unmodified
<b>Isotype</b>	IgG
<b>Clonality</b>	Polyclonal
<b>Form</b>	Liquid
<b>Storage</b>	Store at 4°C short term. Aliquot and store at -20°C long term. Avoid freeze/thaw cycles.
<b>Buffer</b>	Liquid in PBS containing 50% glycerol, 0.5% BSA and 0.02% New type preservative N.
<b>Purification</b>	Affinity purification

## Immunogen

<b>Gene Name</b>	GABRB1
<b>Alternative Names</b>	GABRB1; Gamma-aminobutyric acid receptor subunit beta-1; GABA(A) receptor subunit beta-1
<b>Gene ID</b>	2560.0
<b>SwissProt ID</b>	P18505.The antiserum was produced against synthesized peptide derived from human GABA-RB. AA range:401-450

## Application

<b>Dilution Ratio</b>	IHC 1:100-1:300 ELISA: 1:40000
<b>Molecular Weight</b>	55kD

## Background

**Product Name: GABAA R $\beta$ 1 Rabbit Polyclonal Antibody**  
**Catalog #: APRab11236**

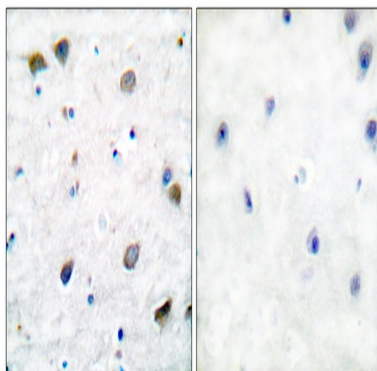


The gamma-aminobutyric acid (GABA) A receptor is a multisubunit chloride channel that mediates the fastest inhibitory synaptic transmission in the central nervous system. This gene encodes GABA A receptor, beta 1 subunit. It is mapped to chromosome 4p12 in a cluster comprised of genes encoding alpha 4, alpha 2 and gamma 1 subunits of the GABA A receptor. Alteration of this gene is implicated in the pathogenetics of schizophrenia. [provided by RefSeq, Jul 2008],function:GABA, the major inhibitory neurotransmitter in the vertebrate brain, mediates neuronal inhibition by binding to the GABA/benzodiazepine receptor and opening an integral chloride channel.,online information:Forbidden fruit - Issue 56 of March 2005,similarity:Belongs to the ligand-gated ionic channel (TC 1.A.9) family.,subunit:Binds UBQLN1 (By similarity). Generally pentameric. There are five types of GABA(A) receptor chains: alpha, beta, gamma, delta, and rho.,

## Research Area

Neuroactive ligand-receptor interaction;

## Image Data



Immunohistochemistry analysis of paraffin-embedded human brain tissue, using GABA-RB Antibody. The picture on the right is blocked with the synthesized peptide.

## Note

For research use only.