

**Product Name: GAAP Rabbit Polyclonal Antibody**  
**Catalog #: APRab11222**



## Summary

<b>Production Name</b>	GAAP Rabbit Polyclonal Antibody
<b>Description</b>	Rabbit Polyclonal Antibody
<b>Host</b>	Rabbit
<b>Application</b>	WB
<b>Reactivity</b>	Human,Rat

## Performance

<b>Conjugation</b>	Unconjugated
<b>Modification</b>	Unmodified
<b>Isotype</b>	IgG
<b>Clonality</b>	Polyclonal
<b>Form</b>	Liquid
<b>Storage</b>	Store at 4°C short term. Aliquot and store at -20°C long term. Avoid freeze/thaw cycles.
<b>Buffer</b>	Liquid in PBS containing 50% glycerol, 0.5% BSA and 0.02% New type preservative N.
<b>Purification</b>	Affinity purification

## Immunogen

<b>Gene Name</b>	TMBIM4
<b>Alternative Names</b>	TMBIM4; GAAP; LFG4; CGI-119; Protein lifeguard 4; Golgi anti-apoptotic protein; Protein S1R; Transmembrane BAX inhibitor motif-containing protein 4; Z-protein
<b>Gene ID</b>	51643.0
<b>SwissProt ID</b>	Q9HC24.The antiserum was produced against synthesized peptide derived from human TMBIM4. AA range:121-170

## Application

<b>Dilution Ratio</b>	WB 1:500-1:2000. ELISA: 1:5000.
<b>Molecular Weight</b>	23kD

## Background

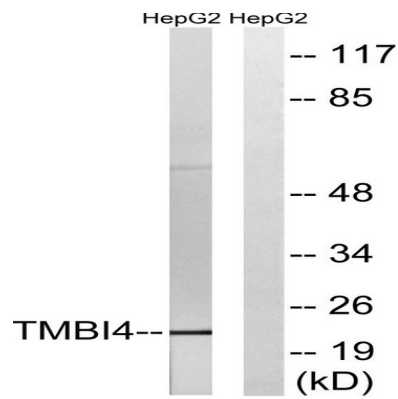
**Product Name: GAAP Rabbit Polyclonal Antibody**  
**Catalog #: APRab11222**



similarity:Belongs to the B11 family.,similarity:Belongs to the B11 family.,

## Research Area

## Image Data



Western blot analysis of lysates from HepG2 cells, using TMBIM4 Antibody. The lane on the right is blocked with the synthesized peptide.

## Note

For research use only.