

---

## Summary

<b>Production Name</b>	Frizzled-5/8 Rabbit Polyclonal Antibody
<b>Description</b>	Rabbit Polyclonal Antibody
<b>Host</b>	Rabbit
<b>Application</b>	IF, WB, ELISA
<b>Reactivity</b>	Human, Mouse, Rat

## Performance

<b>Conjugation</b>	Unconjugated
<b>Modification</b>	Unmodified
<b>Isotype</b>	IgG
<b>Clonality</b>	Polyclonal
<b>Form</b>	Liquid
<b>Storage</b>	Store at 4°C short term. Aliquot and store at -20°C long term. Avoid freeze/thaw cycles.
<b>Buffer</b>	Liquid in PBS containing 50% glycerol, 0.5% BSA and 0.02% New type preservative N.
<b>Purification</b>	Affinity purification

## Immunogen

<b>Gene Name</b>	FZD5/FZD8
<b>Alternative Names</b>	FZD5; C2orf31; Frizzled-5; Fz-5; hFz5; FzE5; FZD8; Frizzled-8; Fz-8; hFz8
<b>Gene ID</b>	8325/7855
<b>SwissProt ID</b>	Q13467/Q9H461. The antiserum was produced against synthesized peptide derived from human FZD8. AA range: 31-80

## Application

<b>Dilution Ratio</b>	WB 1:500 - 1:2000. IF 1:200 - 1:1000. ELISA: 1:20000. Not yet tested in other applications.
<b>Molecular Weight</b>	75kD

**Product Name: Frizzled-5/8 Rabbit Polyclonal Antibody**  
**Catalog #: APRab11146**



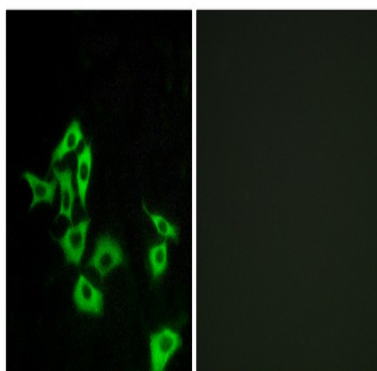
## Background

frizzled class receptor 5(FZD5) Homo sapiens Members of the 'frizzled' gene family encode 7-transmembrane domain proteins that are receptors for Wnt signaling proteins. The FZD5 protein is believed to be the receptor for the Wnt5A ligand. [provided by RefSeq, Jul 2008],domain:Lys-Thr-X-X-X-Trp motif is involved in the activation of the Wnt/beta-catenin signaling pathway.,domain:The FZ domain is involved in binding with Wnt ligands.,domain:The PDZ-binding motif mediates interaction with GOPC.,function:Receptor for Wnt proteins. Most of frizzled receptors are coupled to the beta-catenin canonical signaling pathway, which leads to the activation of disheveled proteins, inhibition of GSK-3 kinase, nuclear accumulation of beta-catenin and activation of Wnt target genes. A second signaling pathway involving PKC and calcium fluxes has been seen for some family members, but it is not yet clear if it represents a distinct pathway or if it can be integrated in the canonical pathway, as PKC seems to be required for Wnt-mediated inactivation of GSK-3 kinase. Both pathways seem to involve interactions with G-proteins. May be involved in transduction and intercellular transmission of polarity information during tissue morphogenesis and/or in differentiated tissues. Interacts specifically with Wnt5A to induce the beta-catenin pathway.,similarity:Belongs to the G-protein coupled receptor Fz/Smo family.,similarity:Contains 1 FZ (frizzled) domain.,subcellular location:Localized at the plasma membrane and also found at the Golgi.,subunit:Interacts with GOPC.,

## Research Area

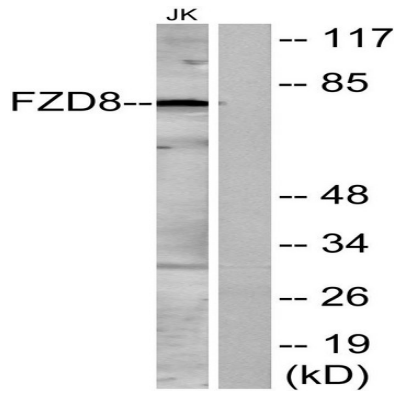
WNT;WNT-T CELLMelanogenesis;Pathways in cancer;Colorectal cancer;Basal cell carcinoma;

## Image Data

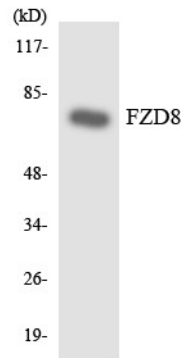


Immunofluorescence analysis of A549 cells, using FZD8 Antibody. The picture on the right is blocked with the synthesized peptide.

Product Name: Frizzled-5/8 Rabbit Polyclonal Antibody  
Catalog #: APRab11146



Western blot analysis of lysates from Jurkat cells, using FZD8 Antibody. The lane on the right is blocked with the synthesized peptide.



Western blot analysis of the lysates from HUVEC cells using FZD8 antibody.

## Note

For research use only.