

Summary

Production Name	Fractalkine Rabbit Polyclonal Antibody
Description	Rabbit Polyclonal Antibody
Host	Rabbit
Application	WB,IHC,ELISA
Reactivity	Human,Rat,Mouse

Performance

Conjugation	Unconjugated
Modification	Unmodified
Isotype	IgG
Clonality	Polyclonal
Form	Liquid
Storage	Store at 4°C short term. Aliquot and store at -20°C long term. Avoid freeze/thaw cycles.
Buffer	Liquid in PBS containing 50% glycerol, 0.5% BSA and 0.02% New type preservative N.
Purification	Affinity purification

Immunogen

Gene Name	CX3CL1
Alternative Names	CX3CL1; FKN; NTT; SCYD1; A-152E5.2; Fractalkine; C-X3-C motif chemokine 1; CX3C membrane-anchored chemokine; Neurotactin; Small-inducible cytokine D1
Gene ID	6376.0
SwissProt ID	P78423.The antiserum was produced against synthesized peptide derived from the Internal region of human CX3CL1. AA range:231-280

Application

Dilution Ratio	WB 1:500 - 1:2000. IHC: 1:100-1:300. ELISA: 1:20000..
Molecular Weight	42kD

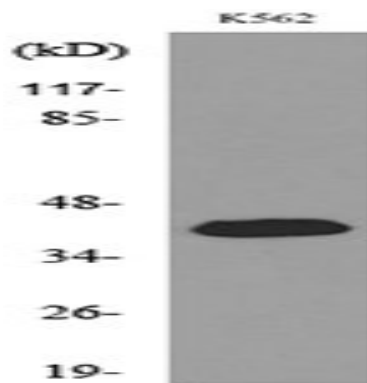
Background

function: The soluble form is chemotactic for T-cells and monocytes, but not for neutrophils. The membrane-bound form promotes adhesion of those leukocytes to endothelial cells. May play a role in regulating leukocyte adhesion and migration processes at the endothelium. Binds to CX3CR1., induction: By TNF and IL-1 in pulmonary endothelial cells and umbilical vein endothelial cells., online information: CX3CL1 entry, PTM: A soluble short 95 kDa form may be released by proteolytic cleavage from the long membrane-anchored form., similarity: Belongs to the intercrine delta family., subunit: Monomer., tissue specificity: Small intestine, colon, testis, prostate, heart, brain, lung, skeletal muscle, kidney and pancreas., function: The soluble form is chemotactic for T-cells and monocytes, but not for neutrophils. The membrane-bound form promotes adhesion of those leukocytes to endothelial cells. May play a role in regulating leukocyte adhesion and migration processes at the endothelium. Binds to CX3CR1., induction: By TNF and IL-1 in pulmonary endothelial cells and umbilical vein endothelial cells., online information: CX3CL1 entry, PTM: A soluble short 95 kDa form may be released by proteolytic cleavage from the long membrane-anchored form., similarity: Belongs to the intercrine delta family., subunit: Monomer., tissue specificity: Small intestine, colon, testis, prostate, heart, brain, lung, skeletal muscle, kidney and pancreas.,

Research Area

Cytokine-cytokine receptor interaction; Chemokine;

Image Data



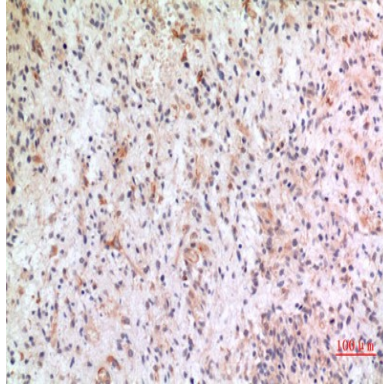
Western blot analysis of lysate from K562 cells, using CX3CL1 Antibody.



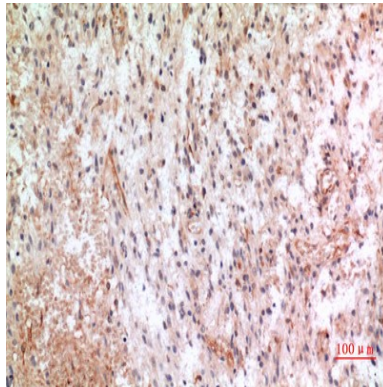
Product Name: Fractalkine Rabbit Polyclonal Antibody
Catalog #: APRab11130



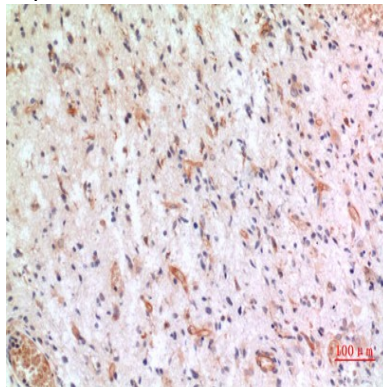
Western Blot analysis of K562 cells using Fractalkine Polyclonal Antibody.. Secondary antibody was diluted at 1:20000



Immunohistochemical analysis of paraffin-embedded human-brain, antibody was diluted at 1:100



Immunohistochemical analysis of paraffin-embedded human-brain, antibody was diluted at 1:100



Immunohistochemical analysis of paraffin-embedded human-brain, antibody was diluted at 1:100

Note

For research use only.