

## Summary

<b>Production Name</b>	FoxR1 Rabbit Polyclonal Antibody
<b>Description</b>	Rabbit Polyclonal Antibody
<b>Host</b>	Rabbit
<b>Application</b>	WB,IHC,ELISA
<b>Reactivity</b>	Human,Mouse

## Performance

<b>Conjugation</b>	Unconjugated
<b>Modification</b>	Unmodified
<b>Isotype</b>	IgG
<b>Clonality</b>	Polyclonal
<b>Form</b>	Liquid
<b>Storage</b>	Store at 4°C short term. Aliquot and store at -20°C long term. Avoid freeze/thaw cycles.
<b>Buffer</b>	Liquid in PBS containing 50% glycerol, 0.5% BSA and 0.02% New type preservative N.
<b>Purification</b>	Affinity purification

## Immunogen

<b>Gene Name</b>	FOXR1
<b>Alternative Names</b>	FOXR1; FOXN5; DLNB13; Forkhead box protein R1; Forkhead box protein N5
<b>Gene ID</b>	283150.0
<b>SwissProt ID</b>	Q6PIV2.The antiserum was produced against synthesized peptide derived from human FOXR1. AA range:231-280

## Application

<b>Dilution Ratio</b>	WB 1:500 - 1:2000. IHC 1:100 - 1:300. ELISA: 1:20000..
<b>Molecular Weight</b>	35kD

## Background

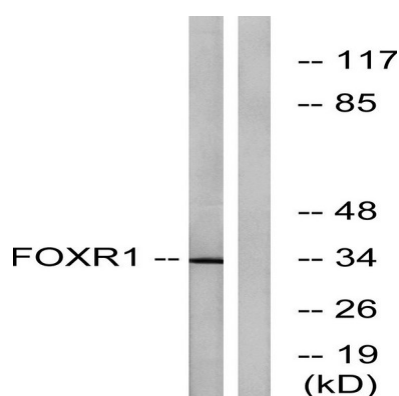
**Product Name: FoxR1 Rabbit Polyclonal Antibody**  
**Catalog #: APRab11119**



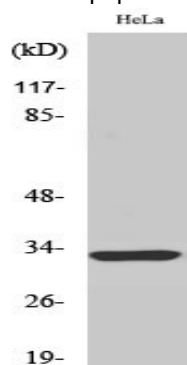
This gene encodes a member of the forkhead box (FOX) family of transcription factors. FOX family members are monomeric, helix-turn-helix proteins with a core DNA-binding domain of approximately 110 aa. Many FOX transcription factors play roles in determining cell fates during early development. This forkhead box protein lacks the C-terminal basic region found in many other FOX family members. It is located within the 11q23.3 region which is commonly deleted in neuroblastomas. [provided by RefSeq, Jul 2008],similarity:Contains 1 fork-head DNA-binding domain.,

## Research Area

## Image Data

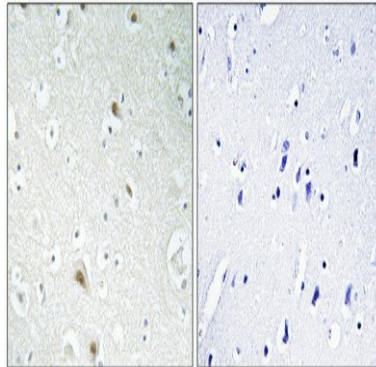


Western blot analysis of lysates from HeLa cells, using FOXR1 Antibody. The lane on the right is blocked with the synthesized peptide.



Western Blot analysis of various cells using FoxR1 Polyclonal Antibody cells nucleus extracted by Minute TM Cytoplasmic and Nuclear Fractionation kit (SC-003, Invent biotech, MN, USA) .

**Product Name: FoxR1 Rabbit Polyclonal Antibody**  
**Catalog #: APRab11119**



Immunohistochemical analysis of paraffin-embedded Human brain. Antibody was diluted at 1:100 (4°, overnight) . High-pressure and temperature Tris-EDTA, pH 8.0 was used for antigen retrieval. Negative control (right) obtained from antibody was pre-absorbed by immunogen peptide.

**Note**

For research use only.