

Summary

Production Name	FoxD4L1 Rabbit Polyclonal Antibody
Description	Rabbit Polyclonal Antibody
Host	Rabbit
Application	WB,ELISA
Reactivity	Human,Rat,Mouse

Performance

Conjugation	Unconjugated
Modification	Unmodified
Isotype	IgG
Clonality	Polyclonal
Form	Liquid
Storage	Store at 4°C short term. Aliquot and store at -20°C long term. Avoid freeze/thaw cycles.
Buffer	Liquid in PBS containing 50% glycerol, 0.5% BSA and 0.02% New type preservative N.
Purification	Affinity purification

Immunogen

Gene Name	FOXD4L1
Alternative Names	FOXD4L1; Forkhead box protein D4-like 1; FOXD4-like 1
Gene ID	200350.0
SwissProt ID	Q9NU39.Synthesized peptide derived from FoxD4L1 . at AA range: 320-400

Application

Dilution Ratio	WB 1:500 - 1:2000. ELISA: 1:40000.
Molecular Weight	45kD

Background

forkhead box D4-like 1(FOXD4L1) Homo sapiens This gene is a member of the forkhead/winged-helix (FOX) family of

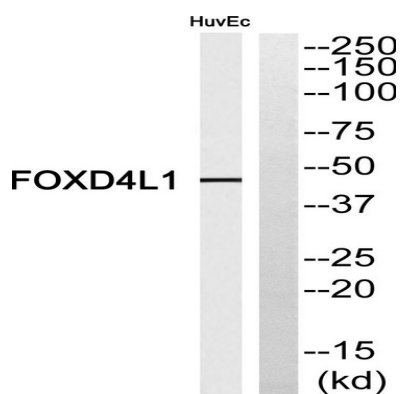
Product Name: FoxD4L1 Rabbit Polyclonal Antibody
Catalog #: APRab11083



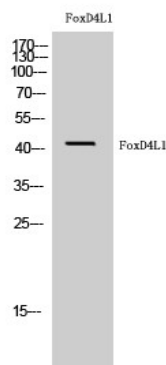
transcription factors with highly conserved FOX DNA-binding domains. Members of the FOX family of transcription factors are regulators of embryogenesis and may play a role in human cancer. This gene lies in a region of chromosome 2 that surrounds the site where two ancestral chromosomes fused to form human chromosome 2. This region is duplicated elsewhere in the human genome, primarily in subtelomeric and pericentromeric locations, thus multiple copies of this gene have been found. [provided by RefSeq, Jul 2008],similarity:Contains 1 fork-head DNA-binding domain.,

Research Area

Image Data



Western blot analysis of FOXD4L1 Antibody. The lane on the right is blocked with the FOXD4L1 peptide.



Western Blot analysis of HuvEc cells using FoxD4L1 Polyclonal Antibody cells nucleus extracted by Minute TM Cytoplasmic and Nuclear Fractionation kit (SC-003, Inventbiotech, MN, USA) .

Note

For research use only.