
Summary

Production Name	FoxB2 Rabbit Polyclonal Antibody
Description	Rabbit Polyclonal Antibody
Host	Rabbit
Application	WB,ELISA
Reactivity	Human,Mouse

Performance

Conjugation	Unconjugated
Modification	Unmodified
Isotype	IgG
Clonality	Polyclonal
Form	Liquid
Storage	Store at 4°C short term. Aliquot and store at -20°C long term. Avoid freeze/thaw cycles.
Buffer	Liquid in PBS containing 50% glycerol, 0.5% BSA and 0.02% New type preservative N.
Purification	Affinity purification

Immunogen

Gene Name	FOXB2
Alternative Names	FOXB2; Forkhead box protein B2
Gene ID	442425.0
SwissProt ID	Q5VYV0.The antiserum was produced against synthesized peptide derived from human FOXB2. AA range:251-300

Application

Dilution Ratio	WB 1:500 - 1:2000. ELISA: 1:40000.
Molecular Weight	46kD

Background

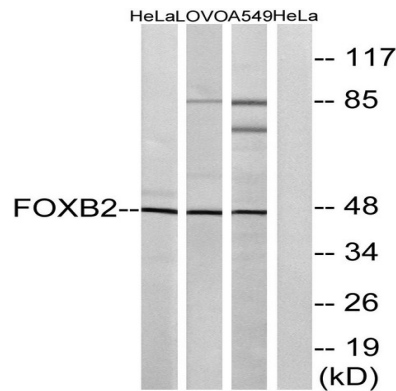
Product Name: FoxB2 Rabbit Polyclonal Antibody
Catalog #: APRab11075



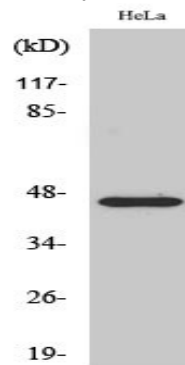
function:Transcription factor.,similarity:Contains 1 fork-head DNA-binding domain.,function:Transcription factor.,similarity:Contains 1 fork-head DNA-binding domain.,

Research Area

Image Data



Western blot analysis of lysates from HeLa, LOVO, and A549 cells, using FOXB2 Antibody. The lane on the right is blocked with the synthesized peptide.



Western Blot analysis of various cells using FoxB2 Polyclonal Antibody cells nucleus extracted by Minute TM Cytoplasmic and Nuclear Fractionation kit (SC-003, Inventbiotech, MN, USA) .

Note

For research use only.