

Product Name: Formin 2 Rabbit Polyclonal Antibody
Catalog #: APRab11068



Summary

Production Name	Formin 2 Rabbit Polyclonal Antibody
Description	Rabbit Polyclonal Antibody
Host	Rabbit
Application	IHC,ELISA
Reactivity	Human,Mouse

Performance

Conjugation	Unconjugated
Modification	Unmodified
Isotype	IgG
Clonality	Polyclonal
Form	Liquid
Storage	Store at 4°C short term. Aliquot and store at -20°C long term. Avoid freeze/thaw cycles.
Buffer	Liquid in PBS containing 50% glycerol, 0.5% BSA and 0.02% New type preservative N.
Purification	Affinity purification

Immunogen

Gene Name	FMN2
Alternative Names	FMN2; Formin-2
Gene ID	56776.0
SwissProt ID	Q9NZ56.The antiserum was produced against synthesized peptide derived from human FMN2. AA range:1541-1590

Application

Dilution Ratio	IHC 1:100-1:300 ELISA: 1:40000
Molecular Weight	

Background

This gene is a member of the formin homology protein family. The encoded protein is thought to have essential roles in

Product Name: Formin 2 Rabbit Polyclonal Antibody
Catalog #: APRab11068

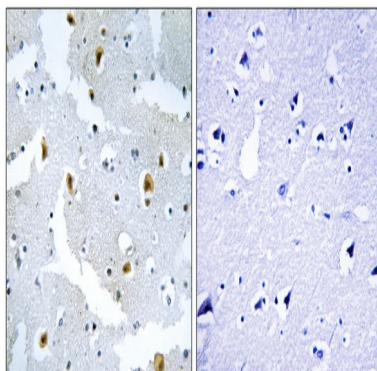


organization of the actin cytoskeleton and in cell polarity. Mutations in this gene have been associated with mental retardation autosomal recessive 47 (MRT47). Alternatively spliced transcript variants have been identified. [provided by RefSeq, Mar 2015],PTM:Phosphorylated upon DNA damage, probably by ATM or ATR.,sequence caution:Contaminating sequence. Sequence of unknown origin in the C-terminal part.,similarity:Belongs to the formin homology family. Cappuccino subfamily.,similarity:Contains 1 FH1 (formin homology 1) domain.,similarity:Contains 1 FH2 (formin homology 2) domain.,tissue specificity:Expressed almost exclusively in the developing and mature central nervous system.,

Research Area

Dorso-ventral axis formation;

Image Data



Immunohistochemistry analysis of paraffin-embedded human brain tissue, using FMN2 Antibody. The picture on the right is blocked with the synthesized peptide.

Note

For research use only.