
Summary

| | |
|------------------------|--------------------------------|
| Production Name | FOP Rabbit Polyclonal Antibody |
| Description | Rabbit Polyclonal Antibody |
| Host | Rabbit |
| Application | IHC, WB, ELISA |
| Reactivity | Human, Mouse, Rat |

Performance

| | |
|---------------------|--|
| Conjugation | Unconjugated |
| Modification | Unmodified |
| Isotype | IgG |
| Clonality | Polyclonal |
| Form | Liquid |
| Storage | Store at 4°C short term. Aliquot and store at -20°C long term. Avoid freeze/thaw cycles. |
| Buffer | Liquid in PBS containing 50% glycerol, 0.5% BSA and 0.02% New type preservative N. |
| Purification | Affinity purification |

Immunogen

| | |
|--------------------------|--|
| Gene Name | FGFR1OP |
| Alternative Names | FGFR1OP; FOP; FGFR1 oncogene partner |
| Gene ID | 11116.0 |
| SwissProt ID | O95684. The antiserum was produced against synthesized peptide derived from human FGFR1 Oncogene Partner. AA range:341-390 |

Application

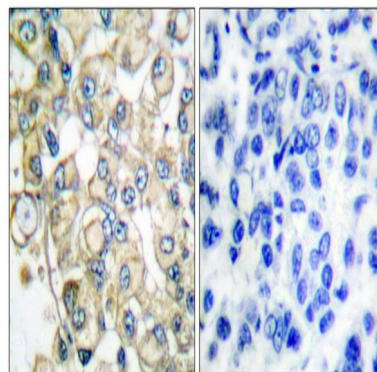
| | |
|-------------------------|---|
| Dilution Ratio | WB 1:500 - 1:2000. IHC 1:100 - 1:300. . ELISA: 1:10000. Not yet tested in other applications. |
| Molecular Weight | 43kD |

Background

FGFR1 oncogene partner(FGFR1OP) Homo sapiens This gene encodes a largely hydrophilic centrosomal protein that is required for anchoring microtubules to subcellular structures. A t(6;8)(q27;p11) chromosomal translocation, fusing this gene and the fibroblast growth factor receptor 1 (FGFR1) gene, has been found in cases of myeloproliferative disorder. The resulting chimeric protein contains the N-terminal leucine-rich region of this encoded protein fused to the catalytic domain of FGFR1. Alterations in this gene may also be associated with Crohn's disease, Graves' disease, and vitiligo. Alternatively spliced transcript variants that encode different proteins have been identified. [provided by RefSeq, Jul 2013],disease:A chromosomal aberration involving FGFR1OP may be a cause of stem cell myeloproliferative disorder (MPD). Translocation t(6;8)(q27;p11) with FGFR1. MPD is characterized by myeloid hyperplasia, eosinophilia and T-cell or B-cell lymphoblastic lymphoma. In general it progresses to acute myeloid leukemia. The fusion proteins FGFR1OP-FGFR1 or FGFR1-FGFR1OP may exhibit constitutive kinase activity and be responsible for the transforming activity.,function:Required for anchoring microtubules to the centrosomes.,similarity:Contains 1 LisH domain.,subcellular location:Associated with gamma-tubulin.,subunit:Homodimer. Part of a ternary complex that contains CEP350, FGFR1OP and MAPRE1. Interacts directly with CEP350 and MAPRE1.,tissue specificity:Ubiquitous. Highly expressed in heart, liver, muscle, kidney, intestine, colon, adrenal gland, prostate, testis, and pancreas.,

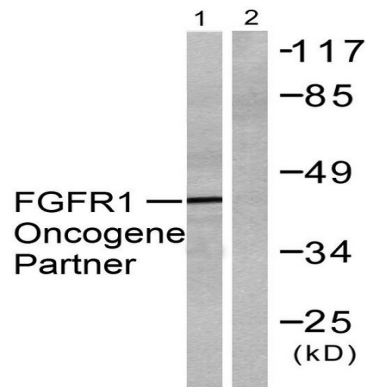
Research Area

Image Data

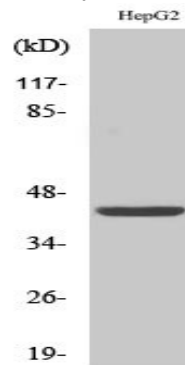


Immunohistochemistry analysis of paraffin-embedded human breast carcinoma tissue, using FGFR1 Oncogene Partner Antibody. The picture on the right is blocked with the synthesized peptide.

Product Name: FOP Rabbit Polyclonal Antibody
Catalog #: APRab11067



Western blot analysis of lysates from HepG2 cells, using FGFR1 Oncogene Partner Antibody. The lane on the right is blocked with the synthesized peptide.



Western Blot analysis of various cells using FOP Polyclonal Antibody

Note

For research use only.