

Summary

| | |
|------------------------|----------------------------------|
| Production Name | FOG-2 Rabbit Polyclonal Antibody |
| Description | Rabbit Polyclonal Antibody |
| Host | Rabbit |
| Application | WB,IHC,ELISA |
| Reactivity | Human,Mouse |

Performance

| | |
|---------------------|--|
| Conjugation | Unconjugated |
| Modification | Unmodified |
| Isotype | IgG |
| Clonality | Polyclonal |
| Form | Liquid |
| Storage | Store at 4°C short term. Aliquot and store at -20°C long term. Avoid freeze/thaw cycles. |
| Buffer | Liquid in PBS containing 50% glycerol, 0.5% BSA and 0.02% New type preservative N. |
| Purification | Affinity purification |

Immunogen

| | |
|--------------------------|---|
| Gene Name | ZFPM2 |
| Alternative Names | ZFPM2; FOG2; ZNF89B; Zinc finger protein ZFPM2; Friend of GATA protein 2; FOG-2; Friend of GATA 2; hFOG-2; Zinc finger protein 89B; Zinc finger protein multitype 2 |
| Gene ID | 23414.0 |
| SwissProt ID | Q8WW38.The antiserum was produced against synthesized peptide derived from the Internal region of human ZFPM2. AA range:921-970 |

Application

| | |
|-------------------------|---|
| Dilution Ratio | WB 1:500 - 1:2000. IHC-p: 1:100-1:300. ELISA: 1:10000.. |
| Molecular Weight | 128kD |

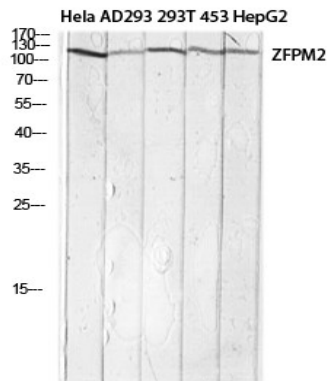
Background

zinc finger protein, FOG family member 2(ZFPM2) Homo sapiens The zinc finger protein encoded by this gene is a widely expressed member of the FOG family of transcription factors. The family members modulate the activity of GATA family proteins, which are important regulators of hematopoiesis and cardiogenesis in mammals. It has been demonstrated that the protein can both activate and down-regulate expression of GATA-target genes, suggesting different modulation in different promoter contexts. A related mRNA suggests an alternatively spliced product but this information is not yet fully supported by the sequence. [provided by RefSeq, Jul 2008],disease:Defects in ZFPM2 are the cause of diaphragmatic hernia 3 (DIH3) [MIM:610187]; a form of congenital diaphragmatic hernia (CDH). CDH refers to a group of congenital defects in the structural integrity of the diaphragm associated with often lethal pulmonary hypoplasia and pulmonary hypertension.,disease:Defects in ZFPM2 may be a cause of tetralogy of Fallot (TOF) [MIM:187500]. TOF is a congenital heart anomaly which consists of pulmonary stenosis, ventricular septal defect, dextroposition of the aorta (aorta is on the right side instead of the left) and hypertrophy of the right ventricle. This condition results in a blue baby at birth due to inadequate oxygenation. Surgical correction is emergent.,domain:The CCHC-type zinc fingers 1, 5, 6 and 8 directly bind to GATA-type zinc fingers. The Tyr residue adjacent to the last Cys of the CCHC-type zinc finger is essential for the interaction with GATA-type zinc fingers.,function:Transcription regulator that plays a central role in heart morphogenesis and development of coronary vessels from epicardium, by regulating genes that are essential during cardiogenesis. Essential cofactor that acts via the formation of a heterodimer with transcription factors of the GATA family GATA4, GATA5 and GATA6. Such heterodimer can both activate or repress transcriptional activity, depending on the cell and promoter context. Also required in gonadal differentiation, possibly by regulating expression of SRY.,similarity:Belongs to the FOG (Friend of GATA) family.,similarity:Contains 3 C2H2-type zinc fingers.,similarity:Contains 5 C2HC-type zinc fingers.,subunit:Interacts with the N-terminal zinc-finger of GATA4, GATA5 and probably GATA6. Interacts with retinoid nuclear receptor RXRA when ligand bound (By similarity). Interacts with corepressor CTBP2; this interaction is however not essential for corepressor activity. Able to bind GATA1 in vitro.,tissue specificity:Widely expressed at low level.,

Research Area

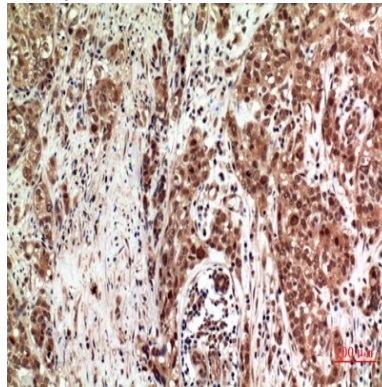
Image Data

Product Name: FOG-2 Rabbit Polyclonal Antibody
Catalog #: APRab11060



Western blot analysis of HeLa AD293 293T 453 HepG2 lysis using ZFPM2 antibody. Antibody was diluted at 1:1000.

Secondary antibody was diluted at 1:20000



Immunohistochemical analysis of paraffin-embedded human-breast-cancer, antibody was diluted at 1:100

Note

For research use only.