

Summary

Production Name	FMIP Rabbit Polyclonal Antibody
Description	Rabbit Polyclonal Antibody
Host	Rabbit
Application	IHC,ELISA
Reactivity	Human,Mouse,Rat

Performance

Conjugation	Unconjugated
Modification	Unmodified
Isotype	IgG
Clonality	Polyclonal
Form	Liquid
Storage	Store at 4°C short term. Aliquot and store at -20°C long term. Avoid freeze/thaw cycles.
Buffer	Liquid in PBS containing 50% glycerol, 0.5% BSA and 0.02% New type preservative N.
Purification	Affinity purification

Immunogen

Gene Name	THOC5
Alternative Names	THOC5; C22orf19; KIAA0983; THO complex subunit 5 homolog; Functional spliceosome-associated protein 79; fSAP79; NF2/meningioma region protein pK1.3; Placental protein 39.2; PP39.2; hTREX90
Gene ID	8563.0
SwissProt ID	Q13769.The antiserum was produced against synthesized peptide derived from human THOC5. AA range:561-610

Application

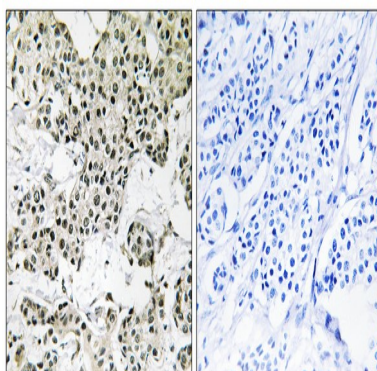
Dilution Ratio	IHC 1:100-1:300 ELISA: 1:20000
Molecular Weight	78kD

Background

function:May be involved in the differentiation of granulocytes and adipocytes.,PTM:Phosphorylated on tyrosine upon binding to activated CSF1R; which causes a dissociation of the two proteins. Phosphorylation on Ser-5 and/or Ser-6 is required for nuclear export. Phosphorylated on Thr-328 in insulin-stimulated adipocytes (By similarity). Phosphorylated upon DNA damage, probably by ATM or ATR.,similarity:Belongs to the THOC5 family.,subcellular location:Shuttles between nucleus and cytoplasm.,subunit:Interacts with phosphorylated CSF1R.,tissue specificity:Ubiquitously expressed.,function:May be involved in the differentiation of granulocytes and adipocytes.,PTM:Phosphorylated on tyrosine upon binding to activated CSF1R; which causes a dissociation of the two proteins. Phosphorylation on Ser-5 and/or Ser-6 is required for nuclear export. Phosphorylated on Thr-328 in insulin-stimulated adipocytes (By similarity). Phosphorylated upon DNA damage, probably by ATM or ATR.,similarity:Belongs to the THOC5 family.,subcellular location:Shuttles between nucleus and cytoplasm.,subunit:Interacts with phosphorylated CSF1R.,tissue specificity:Ubiquitously expressed.,

Research Area

Image Data



Immunohistochemistry analysis of paraffin-embedded human breast carcinoma tissue, using THOC5 Antibody. The picture on the right is blocked with the synthesized peptide.

Note

For research use only.