

Summary

Production Name	Flt3-L Rabbit Polyclonal Antibody
Description	Rabbit Polyclonal Antibody
Host	Rabbit
Application	WB
Reactivity	Human,Rat,Mouse

Performance

Conjugation	Unconjugated
Modification	Unmodified
Isotype	IgG
Clonality	Polyclonal
Form	Liquid
Storage	Store at 4°C short term. Aliquot and store at -20°C long term. Avoid freeze/thaw cycles.
Buffer	Liquid in PBS containing 50% glycerol, 0.5% BSA and 0.02% New type preservative N.
Purification	Affinity purification

Immunogen

Gene Name	FLT3LG
Alternative Names	FLT3LG; Fms-related tyrosine kinase 3 ligand; Flt3 ligand; Flt3L; SL cytokine
Gene ID	2323.0
SwissProt ID	P49771.The antiserum was produced against synthesized peptide derived from the C-terminal region of human FLT3LG. AA range:171-220

Application

Dilution Ratio	WB 1:500-1:2000. ELISA: 1:20000.
Molecular Weight	26kD

Background

Dendritic cells (DCs) provide the key link between innate and adaptive immunity by recognizing pathogens and priming

Product Name: Flt3-L Rabbit Polyclonal Antibody
Catalog #: APRab11038

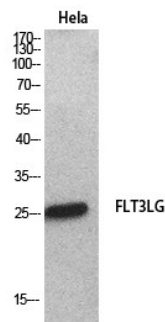


pathogen-specific immune responses. FLT3LG controls the development of DCs and is particularly important for plasmacytoid DCs and CD8 (see MIM 186910)-positive classical DCs and their CD103 (ITGAE; MIM 604682)-positive tissue counterparts (summary by Sathaliyawala et al., 2010 [PubMed 20933441]).[supplied by OMIM, Jan 2011],function:Stimulates the proliferation of early hematopoietic cells. Synergizes well with a number of other colony stimulating factors and interleukins.,subunit:Homodimer (isoform 2),.

Research Area

Cytokine-cytokine receptor interaction;Hematopoietic cell lineage;Pathways in cancer;

Image Data



Western Blot analysis of HeLa cells using Flt3-L Polyclonal Antibody.. Secondary antibody was diluted at 1:20000

Note

For research use only.