

Summary

Production Name	Flotillin-1 Rabbit Polyclonal Antibody
Description	Rabbit Polyclonal Antibody
Host	Rabbit
Application	WB
Reactivity	Human,Mouse,Rat

Performance

Conjugation	Unconjugated
Modification	Unmodified
Isotype	IgG
Clonality	Polyclonal
Form	Liquid
Storage	Store at 4°C short term. Aliquot and store at -20°C long term. Avoid freeze/thaw cycles.
Buffer	Liquid in PBS containing 50% glycerol, 0.5% BSA and 0.02% New type preservative N.
Purification	Affinity purification

Immunogen

Gene Name	FLOT1
Alternative Names	Flotillin-1
Gene ID	10211.0
SwissProt ID	O75955.Synthesized peptide derived from human Flotillin-1

Application

Dilution Ratio	WB 1:500-2000, ELISA(peptide)1:5000-20000
Molecular Weight	48kD

Background

This gene encodes a protein that localizes to the caveolae, which are small domains on the inner cell membranes. This protein plays a role in vesicle trafficking and cell morphology. Alternative splicing results in multiple transcript variants.

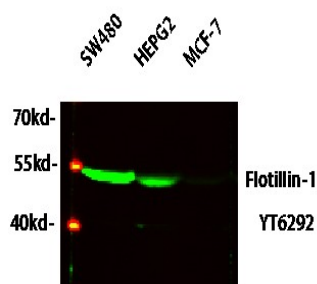
Product Name: Flotillin-1 Rabbit Polyclonal Antibody
Catalog #: APRab11029



[provided by RefSeq, Jan 2016],function:May act as a scaffolding protein within caveolar membranes, functionally participating in formation of caveolae or caveolae-like vesicles.,similarity:Belongs to the band 7/mec-2 family. Flotillin subfamily.,subcellular location:Membrane-associated protein of caveolae. Identified by mass spectrometry in melanosome fractions from stage I to stage IV.,subunit:Heterooligomeric complex of flotillin-1 and flotillin-2 and caveolin-1 and caveolin-2.,

Research Area

Image Data



Western blot analysis of various lysates, primary antibody was diluted at 1:1000, 4° over night, secondary antibody was diluted at 1:10000, 37° 1hour.

Note

For research use only.