

Summary

Production Name	FKHRL1 Rabbit Polyclonal Antibody
Description	Rabbit Polyclonal Antibody
Host	Rabbit
Application	WB
Reactivity	Human,Mouse,Rat

Performance

Conjugation	Unconjugated
Modification	Unmodified
Isotype	IgG
Clonality	Polyclonal
Form	Liquid
Storage	Store at 4°C short term. Aliquot and store at -20°C long term. Avoid freeze/thaw cycles.
Buffer	Liquid in PBS containing 50% glycerol, 0.5% BSA and 0.02% New type preservative N.
Purification	Affinity purification

Immunogen

Gene Name	FOXO3 FKHRL1 FOXO3A
Alternative Names	Forkhead box protein O3 (AF6q21 protein) (Forkhead in rhabdomyosarcoma-like 1)
Gene ID	2309.0
SwissProt ID	O43524.Synthesized peptide derived from human FKHRL1 Polyclonal

Application

Dilution Ratio	WB 1:500-2000, ELISA 1:10000-20000
Molecular Weight	65kD

Background

This gene belongs to the forkhead family of transcription factors which are characterized by a distinct forkhead domain. This gene likely functions as a trigger for apoptosis through expression of genes necessary for cell death. Translocation of

Product Name: FKHRL1 Rabbit Polyclonal Antibody
Catalog #: APRab11014

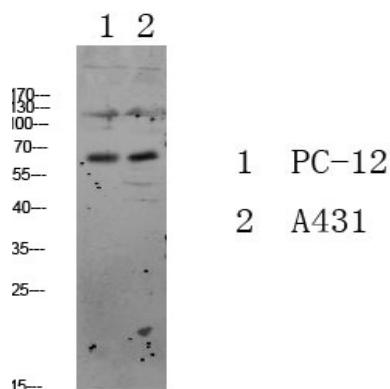


this gene with the MLL gene is associated with secondary acute leukemia. Alternatively spliced transcript variants encoding the same protein have been observed. [provided by RefSeq, Jul 2008],disease:A chromosomal aberration involving FOXO3 is found in secondary acute leukemias. Translocation t(6;11)(q21;q23) with MLL/HRX.,function:Transcriptional activator which triggers apoptosis in the absence of survival factors, including neuronal cell death upon oxidative stress. Recognizes and binds to the DNA sequence 5'-[AG]TAAA[TC]A-3',PTM:In the presence of survival factors such as IGF-1, phosphorylated on Thr-32 and Ser-253 by AKT1/PKB. This phosphorylated form then interacts with 14-3-3 proteins and is retained in the cytoplasm. Survival factor withdrawal induces dephosphorylation and promotes translocation to the nucleus where the dephosphorylated protein induces transcription of target genes and triggers apoptosis. Although AKT1/PKB doesn't appear to phosphorylate Ser-315 directly, it may activate other kinases that trigger phosphorylation at this residue. Phosphorylated by STK4 on Ser-209 upon oxidative stress, which leads to dissociation from YWHAB/14-3-3-beta and nuclear translocation.,similarity:Contains 1 fork-head DNA-binding domain.,subcellular location:Translocates to the nucleus upon oxidative stress and in the absence of survival factors.,subunit:Interacts with YWHAB/14-3-3-beta and YWHAZ/14-3-3-zeta, which are required for cytosolic sequestration. Upon oxidative stress, interacts with STK4, which disrupts interaction with YWHAB/14-3-3-beta and leads to nuclear translocation.,tissue specificity:Ubiquitous.,

Research Area

Chemokine;Neurotrophin;Endometrial cancer;Non-small cell lung cancer;

Image Data



Western blot analysis of various lysate, antibody was diluted at 1000. Secondary antibody was diluted at 1:20000

Note

For research use only.