

## Summary

<b>Production Name</b>	FKBP1B Rabbit Polyclonal Antibody
<b>Description</b>	Rabbit Polyclonal Antibody
<b>Host</b>	Rabbit
<b>Application</b>	WB,ELISA
<b>Reactivity</b>	Human,Rat,Mouse

## Performance

<b>Conjugation</b>	Unconjugated
<b>Modification</b>	Unmodified
<b>Isotype</b>	IgG
<b>Clonality</b>	Polyclonal
<b>Form</b>	Liquid
<b>Storage</b>	Store at 4°C short term. Aliquot and store at -20°C long term. Avoid freeze/thaw cycles.
<b>Buffer</b>	Liquid in PBS containing 50% glycerol, 0.5% BSA and 0.02% New type preservative N.
<b>Purification</b>	Affinity purification

## Immunogen

<b>Gene Name</b>	FKBP1B FKBP12.6 FKBP1L FKBP9 OTK4 Peptidyl-prolyl cis-trans isomerase FKBP1B (PPIase FKBP1B;EC 5.2.1.8;12.6 kDa FK506-binding protein;12.6 kDa FKBP;FKBP-12.6;FK506-binding protein 1B;FKBP-1B;Immunophilin FKBP12.6;Rotamase;h-FKBP-12)
<b>Alternative Names</b>	
<b>Gene ID</b>	2281.0
<b>SwissProt ID</b>	P68106.Synthesized peptide derived from human FKBP1B AA range: 35-85

## Application

<b>Dilution Ratio</b>	IHC 1:50-200 ELISA(peptide)1:5000-20000
<b>Molecular Weight</b>	

## Background

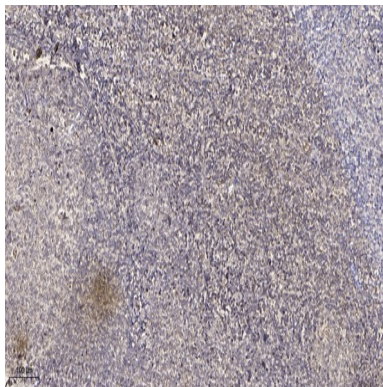
**Product Name: FKBP1B Rabbit Polyclonal Antibody**  
**Catalog #: APRab11003**



The protein encoded by this gene is a member of the immunophilin protein family, which play a role in immunoregulation and basic cellular processes involving protein folding and trafficking. This encoded protein is a cis-trans prolyl isomerase that binds the immunosuppressants FK506 and rapamycin. It is highly similar to the FK506-binding protein 1A. Its physiological role is thought to be in excitation-contraction coupling in cardiac muscle. There are two alternatively spliced transcript variants of this gene encoding different isoforms. [provided by RefSeq, Jul 2008],catalytic activity:Peptidylproline (omega=180) = peptidylproline (omega=0),enzyme regulation:Inhibited by both FK506 and rapamycin.,function:Associates with the ryanodine receptor (RYR-2) in cardiac muscle sarcoplasmic reticulum and may play a unique physiological role in excitation-contraction coupling in cardiac muscle. There are four molecules of FKBP12.6 per heart muscle RYR. Has the potential to contribute to the immunosuppressive and toxic effects of FK506 and rapamycin. PPlases accelerate the folding of proteins. It catalyzes the cis-trans isomerization of proline imidic peptide bonds in oligopeptides.,similarity:Belongs to the FKBP-type PPlase family. FKBP1 subfamily.,similarity:Contains 1 PPlase FKBP-type domain.,tissue specificity:Ubiquitous for both isoforms with highest levels in brain and thymus.,

## Research Area

## Image Data



Immunohistochemical analysis of paraffin-embedded human tonsil. 1, Antibody was diluted at 1:200 (4° overnight) . 2, Tris-EDTA,pH9.0 was used for antigen retrieval. 3,Secondary antibody was diluted at 1:200 (room temperature, 30min) .

## Note

For research use only.