
Summary

Production Name	Fibulin-2 Rabbit Polyclonal Antibody
Description	Rabbit Polyclonal Antibody
Host	Rabbit
Application	IF,IHC,WB,ELISA
Reactivity	Human,Rat,Mouse

Performance

Conjugation	Unconjugated
Modification	Unmodified
Isotype	IgG
Clonality	Polyclonal
Form	Liquid
Storage	Store at 4°C short term. Aliquot and store at -20°C long term. Avoid freeze/thaw cycles.
Buffer	Liquid in PBS containing 50% glycerol, 0.5% BSA and 0.02% New type preservative N.
Purification	Affinity purification

Immunogen

Gene Name	FBLN2
Alternative Names	FBLN2; Fibulin-2; FIBL-2
Gene ID	2199.0
SwissProt ID	P98095.The antiserum was produced against synthesized peptide derived from human FBLN2. AA range:241-290

Application

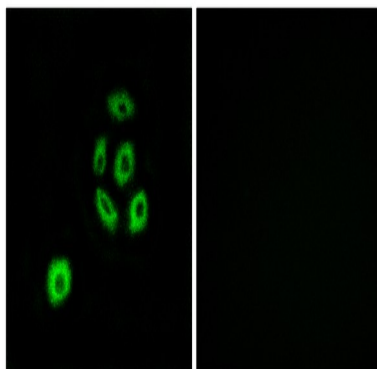
Dilution Ratio	WB 1:500 - 1:2000. IHC 1:100 - 1:300. IF 1:200 - 1:1000. ELISA: 1:40000. Not yet tested in other applications.
Molecular Weight	130kD

Background

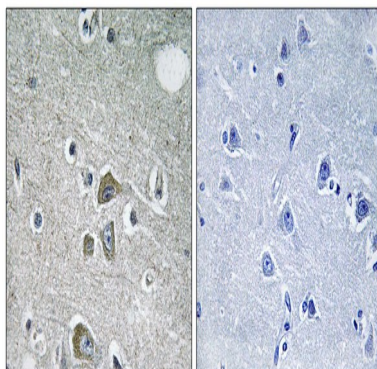
This gene encodes an extracellular matrix protein, which belongs to the fibulin family. This protein binds various extracellular ligands and calcium. It may play a role during organ development, in particular, during the differentiation of heart, skeletal and neuronal structures. Alternatively spliced transcript variants encoding different isoforms have been identified. [provided by RefSeq, Jul 2008],developmental stage:Widely expressed during embryonic development. Primarily detected within the neuropithelium, spinal ganglia and peripheral nerves.,function:Its binding to fibronectin and some other ligands is calcium dependent.,similarity:Belongs to the fibulin family.,similarity:Contains 11 EGF-like domains.,similarity:Contains 3 anaphylatoxin-like domains.,subunit:Homotrimer; disulfide-linked. Interacts with LAMA2.,tissue specificity:Component of both basement membranes and other connective tissues. Expressed in heart, placenta and ovary.,

Research Area

Image Data

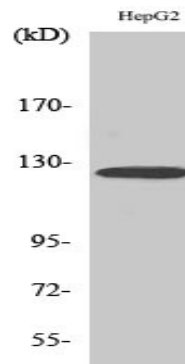


Immunofluorescence analysis of A549 cells, using FBLN2 Antibody. The picture on the right is blocked with the synthesized peptide.



Immunohistochemistry analysis of paraffin-embedded human brain tissue, using FBLN2 Antibody. The picture on the right is blocked with the synthesized peptide.

Product Name: Fibulin-2 Rabbit Polyclonal Antibody
Catalog #: APRab10978



Western Blot analysis of various cells using Fibulin-2 Polyclonal Antibody diluted at 1: 500

Note

For research use only.