
Summary

Production Name	FBP3 Rabbit Polyclonal Antibody
Description	Rabbit Polyclonal Antibody
Host	Rabbit
Application	WB,IHC,ELISA
Reactivity	Human,Mouse,Rat

Performance

Conjugation	Unconjugated
Modification	Unmodified
Isotype	IgG
Clonality	Polyclonal
Form	Liquid
Storage	Store at 4°C short term. Aliquot and store at -20°C long term. Avoid freeze/thaw cycles.
Buffer	Liquid in PBS containing 50% glycerol, 0.5% BSA and 0.02% New type preservative N.
Purification	Affinity purification

Immunogen

Gene Name	FUBP3
Alternative Names	FUBP3; FBP3; Far upstream element-binding protein 3; FUSE-binding protein 3
Gene ID	8939.0
SwissProt ID	Q96I24.The antiserum was produced against synthesized peptide derived from human FUBP3. AA range:201-250

Application

Dilution Ratio	WB 1:500 - 1:2000. IHC 1:100 - 1:300. ELISA: 1:20000..
Molecular Weight	60kD

Background

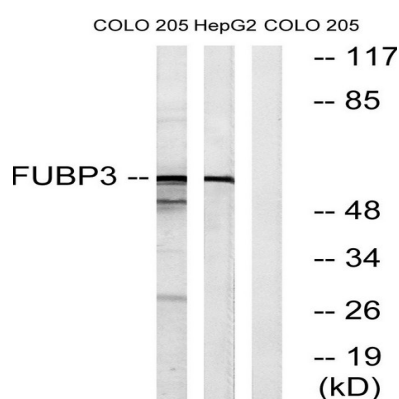
Product Name: FBP3 Rabbit Polyclonal Antibody
Catalog #: APRab10861



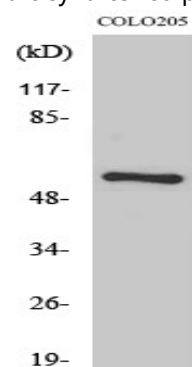
function: May interact with single-stranded DNA from the far-upstream element (FUSE). May activate gene expression., PTM: Phosphorylated upon DNA damage, probably by ATM or ATR., similarity: Contains 4 KH domains., tissue specificity: Detected in a number of cell lines., function: May interact with single-stranded DNA from the far-upstream element (FUSE). May activate gene expression., PTM: Phosphorylated upon DNA damage, probably by ATM or ATR., similarity: Contains 4 KH domains., tissue specificity: Detected in a number of cell lines.,

Research Area

Image Data

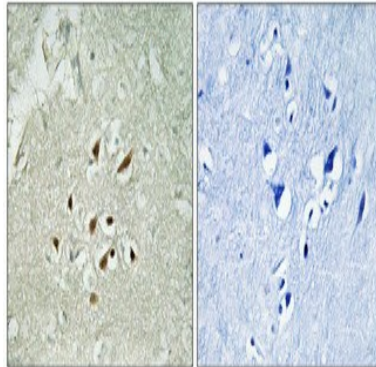


Western blot analysis of lysates from COLO and HepG2 cells, using FBP3 Antibody. The lane on the right is blocked with the synthesized peptide.



Western Blot analysis of various cells using FBP3 Polyclonal Antibody cells nucleus extracted by Minute TM Cytoplasmic and Nuclear Fractionation kit (SC-003, Invent biotech, MN, USA).

Product Name: FBP3 Rabbit Polyclonal Antibody
Catalog #: APRab10861



Immunohistochemical analysis of paraffin-embedded Human brain. Antibody was diluted at 1:100 (4°, overnight) . High-pressure and temperature Tris-EDTA, pH8.0 was used for antigen retrieval. Negative control (right) obtained from antibody was pre-absorbed by immunogen peptide.

Note

For research use only.