

Product Name: FAT2 Rabbit Polyclonal Antibody
Catalog #: APRab10847



Summary

Production Name	FAT2 Rabbit Polyclonal Antibody
Description	Rabbit Polyclonal Antibody
Host	Rabbit
Application	WB,ELISA
Reactivity	Human,Mouse,Rat

Performance

Conjugation	Unconjugated
Modification	Unmodified
Isotype	IgG
Clonality	Polyclonal
Form	Liquid
Storage	Store at 4°C short term. Aliquot and store at -20°C long term. Avoid freeze/thaw cycles.
Buffer	Liquid in PBS containing 50% glycerol, and 0.02% New type preservative N.
Purification	Affinity purification

Immunogen

Gene Name	FAT2 CDHF8 KIAA0811 MEGF1
Alternative Names	
Gene ID	2196.0
SwissProt ID	Q9NYQ8.Synthesized peptide derived from part region of human protein

Application

Dilution Ratio	IHC 1:50-300
Molecular Weight	478kD

Background

This gene is the second identified human homolog of the Drosophila fat gene, which encodes a tumor suppressor essential for controlling cell proliferation during Drosophila development. The gene product is a member of the cadherin

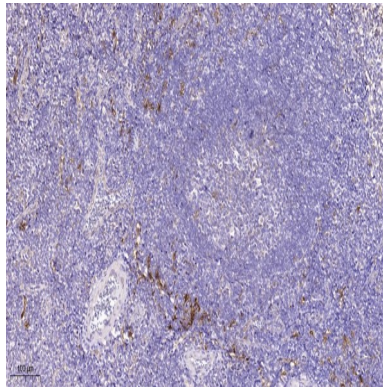
Product Name: FAT2 Rabbit Polyclonal Antibody
Catalog #: APRab10847



superfamily, a group of integral membrane proteins characterized by the presence of cadherin-type repeats. In addition to containing 34 tandem cadherin-type repeats, the gene product has two epidermal growth factor (EGF)-like repeats and one laminin G domain. This protein most likely functions as a cell adhesion molecule, controlling cell proliferation and playing an important role in cerebellum development. [provided by RefSeq, Jul 2008],similarity:Contains 1 laminin G-like domain.,similarity:Contains 2 EGF-like domains.,similarity:Contains 32 cadherin domains.,

Research Area

Image Data



Immunohistochemical analysis of paraffin-embedded human tonsil. 1, Tris-EDTA,pH9.0 was used for antigen retrieval. 2 Antibody was diluted at 1:200 (4° overnight,3,Secondary antibody was diluted at 1:200 (room temperature, 45min) .

Note

For research use only.