

---

## Summary

<b>Production Name</b>	FASTKD2 Rabbit Polyclonal Antibody
<b>Description</b>	Rabbit Polyclonal Antibody
<b>Host</b>	Rabbit
<b>Application</b>	WB,ELISA
<b>Reactivity</b>	Human,Rat,Mouse

## Performance

<b>Conjugation</b>	Unconjugated
<b>Modification</b>	Unmodified
<b>Isotype</b>	IgG
<b>Clonality</b>	Polyclonal
<b>Form</b>	Liquid
<b>Storage</b>	Store at 4°C short term. Aliquot and store at -20°C long term. Avoid freeze/thaw cycles.
<b>Buffer</b>	Liquid in PBS containing 50% glycerol, 0.5% BSA and 0.02% New type preservative N.
<b>Purification</b>	Affinity purification

## Immunogen

<b>Gene Name</b>	FASTKD2
<b>Alternative Names</b>	FASTKD2; KIAA0971; FAST kinase domain-containing protein 2
<b>Gene ID</b>	22868.0
<b>SwissProt ID</b>	Q9NYY8.The antiserum was produced against synthesized peptide derived from human FAKD2. AA range:171-220

## Application

<b>Dilution Ratio</b>	WB 1:500 - 1:2000. ELISA: 1:5000..
<b>Molecular Weight</b>	81kD

## Background

---

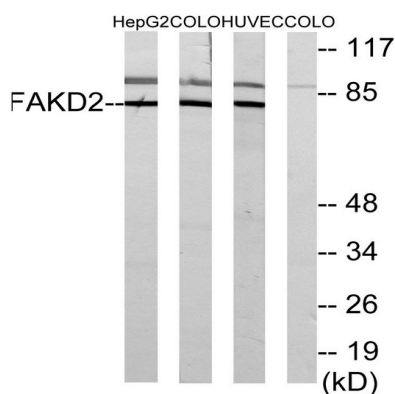
**Product Name: FASTKD2 Rabbit Polyclonal Antibody**  
**Catalog #: APRab10843**



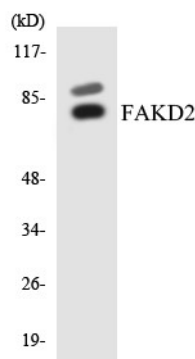
This gene encodes a protein that is localized in the mitochondrial inner compartment and that may play a role in mitochondrial apoptosis. Nonsense mutations have been reported to result in cytochrome c oxidase deficiency. [provided by RefSeq, Oct 2008],caution:It is uncertain whether Met-1 or Met-17 is the initiator.,similarity:Belongs to the FAST kinase family.,similarity:Contains 1 RAP domain.,

## Research Area

## Image Data

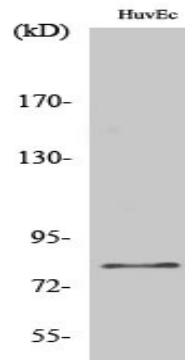


Western blot analysis of lysates from HUVEC, HepG2, and COLO cells, using FAKD2 Antibody. The lane on the right is blocked with the synthesized peptide.



Western blot analysis of the lysates from COLO205 cells using FAKD2 antibody.

**Product Name: FASTKD2 Rabbit Polyclonal Antibody**  
**Catalog #: APRab10843**



Western Blot analysis of various cells using FASTKD2 Polyclonal Antibody

**Note**

For research use only.