

Summary

| | |
|------------------------|-------------------------------------|
| Production Name | FAST-1/2 Rabbit Polyclonal Antibody |
| Description | Rabbit Polyclonal Antibody |
| Host | Rabbit |
| Application | WB,IF,ELISA |
| Reactivity | Human,Mouse |

Performance

| | |
|---------------------|--|
| Conjugation | Unconjugated |
| Modification | Unmodified |
| Isotype | IgG |
| Clonality | Polyclonal |
| Form | Liquid |
| Storage | Store at 4°C short term. Aliquot and store at -20°C long term. Avoid freeze/thaw cycles. |
| Buffer | Liquid in PBS containing 50% glycerol, 0.5% BSA and 0.02% New type preservative N. |
| Purification | Affinity purification |

Immunogen

| | |
|--------------------------|---|
| Gene Name | FOXH1 |
| Alternative Names | FOXH1; FAST1; FAST2; Forkhead box protein H1; Forkhead activin signal transducer 1; Fast-1; hFAST-1; Forkhead activin signal transducer 2; Fast-2 |
| Gene ID | 8928.0 |
| SwissProt ID | O75593.The antiserum was produced against synthesized peptide derived from human FOXH1. AA range:10-59 |

Application

| | |
|-------------------------|---|
| Dilution Ratio | WB 1:500 - 1:2000. IF 1:200 - 1:1000. ELISA: 1:10000. Not yet tested in other applications. |
| Molecular Weight | 40kD |

Product Name: FAST-1/2 Rabbit Polyclonal Antibody
Catalog #: APRab10841

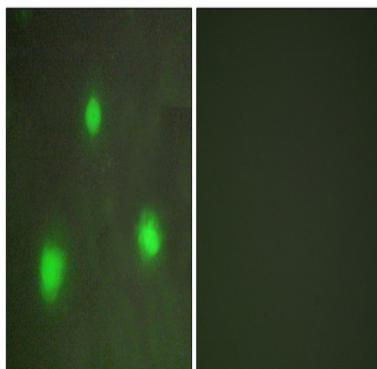


Background

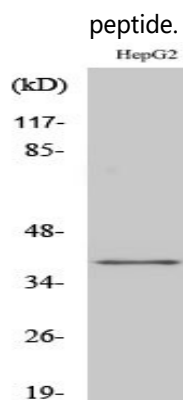
FOXH1 encodes a human homolog of Xenopus forkhead activin signal transducer-1. FOXH1 protein binds SMAD2 and activates an activin response element via binding the DNA motif TGT(G/T)(T/G)ATT. [provided by RefSeq, Jul 2008],domain:The FM region is required for binding smad2/smad4 complexes. FM2 is more effective than FM1 and only interacts with phosphorylated smad2 that is in an activated smad complex.,function:Transcriptional activator. Recognizes and binds to the DNA sequence 5'-TGT[GT][GT]ATT-3'. Required for induction of the gooseoid (GSC) promoter by TGF-beta or activin signaling. Forms a transcriptionally active complex containing FOXH1/SMAD2/SMAD4 on a site on the GSC promoter called TARE (TGF-beta/activin response element),similarity:Contains 1 fork-head DNA-binding domain.,subunit:Interacts with the MH2 domains of SMAD2 and SMAD3.,tissue specificity:Ubiquitous.,

Research Area

Image Data



Immunofluorescence analysis of A549 cells, using FOXH1 Antibody. The picture on the right is blocked with the synthesized peptide.



Western Blot analysis of various cells using FAST-1/2 Polyclonal Antibody cells nucleus extracted by Minute TM Cytoplasmic and Nuclear Fractionation kit (SC-003, Invent biotech, MN, USA) .

Product Name: FAST-1/2 Rabbit Polyclonal Antibody
Catalog #: APRab10841



Note

For research use only.