

Summary

Production Name	FAM80B Rabbit Polyclonal Antibody
Description	Rabbit Polyclonal Antibody
Host	Rabbit
Application	WB,ELISA
Reactivity	Human,Mouse,Rat,Monkey

Performance

Conjugation	Unconjugated
Modification	Unmodified
Isotype	IgG
Clonality	Polyclonal
Form	Liquid
Storage	Store at 4°C short term. Aliquot and store at -20°C long term. Avoid freeze/thaw cycles.
Buffer	Liquid in PBS containing 50% glycerol, 0.5% BSA and 0.02% New type preservative N.
Purification	Affinity purification

Immunogen

Gene Name	RIMKLB
Alternative Names	RIMKLB; FAM80B; KIAA1238; Beta-citryl-glutamate synthase B; N-acetyl-aspartyl-glutamate synthetase B; NAAG synthetase B; NAAGS; Ribosomal protein S6 modification-like protein B
Gene ID	57494.0
SwissProt ID	Q9ULI2.The antiserum was produced against synthesized peptide derived from human RIMKB. AA range:177-226

Application

Dilution Ratio	WB 1:500 - 1:2000. ELISA: 1:5000.
Molecular Weight	42kD

Product Name: FAM80B Rabbit Polyclonal Antibody
Catalog #: APRab10820

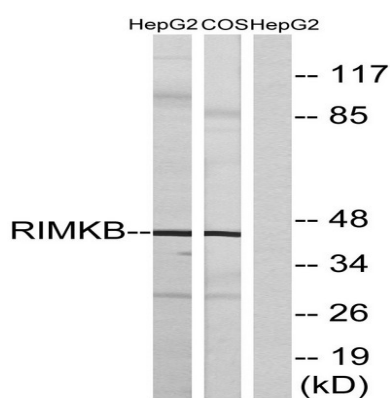


Background

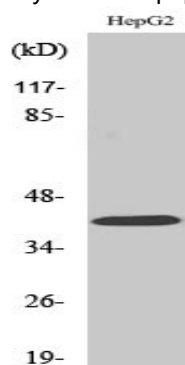
cofactor: Binds 2 manganese ions per subunit, similarity: Belongs to the rimK family, similarity: Contains 1 ATP-grasp domain, cofactor: Binds 2 manganese ions per subunit, similarity: Belongs to the rimK family, similarity: Contains 1 ATP-grasp domain,

Research Area

Image Data



Western blot analysis of lysates from HepG2 and COS cells, using RIMKB Antibody. The lane on the right is blocked with the synthesized peptide.



Western Blot analysis of various cells using FAM80B Polyclonal Antibody diluted at 1: 500

Note

For research use only.