

**Product Name: ET-1 Rabbit Polyclonal Antibody**  
**Catalog #: APRab10640**

---

## Summary

<b>Production Name</b>	ET-1 Rabbit Polyclonal Antibody
<b>Description</b>	Rabbit Polyclonal Antibody
<b>Host</b>	Rabbit
<b>Application</b>	WB,ELISA
<b>Reactivity</b>	Human,Rat,Mouse

## Performance

<b>Conjugation</b>	Unconjugated
<b>Modification</b>	Unmodified
<b>Isotype</b>	IgG
<b>Clonality</b>	Polyclonal
<b>Form</b>	Liquid
<b>Storage</b>	Store at 4°C short term. Aliquot and store at -20°C long term. Avoid freeze/thaw cycles.
<b>Buffer</b>	Liquid in PBS containing 50% glycerol, 0.5% BSA and 0.02% New type preservative N.
<b>Purification</b>	Affinity purification

## Immunogen

<b>Gene Name</b>	EDN1
<b>Alternative Names</b>	EDN1; Endothelin-1; Preproendothelin-1; PPET1
<b>Gene ID</b>	1906.0
<b>SwissProt ID</b>	P05305.The antiserum was produced against synthesized peptide derived from the Internal region of human EDN1. AA range:131-180

## Application

<b>Dilution Ratio</b>	WB 1:500 - 1:2000. ELISA: 1:20000
<b>Molecular Weight</b>	25kD

## Background

---

**Product Name: ET-1 Rabbit Polyclonal Antibody**  
**Catalog #: APRab10640**

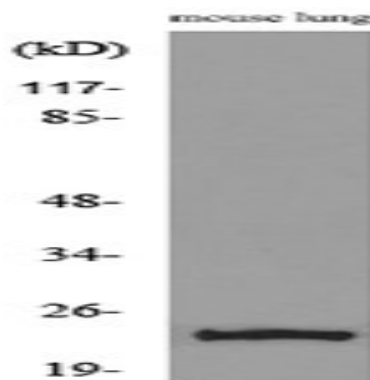


This gene encodes a preproprotein that is proteolytically processed to generate a secreted peptide that belongs to the endothelin/sarafotoxin family. This peptide is a potent vasoconstrictor and its cognate receptors are therapeutic targets in the treatment of pulmonary arterial hypertension. Aberrant expression of this gene may promote tumorigenesis. Alternative splicing results in multiple transcript variants. [provided by RefSeq, Oct 2015],function:Endothelins are endothelium-derived vasoconstrictor peptides.,online information:Endothelin entry,similarity:Belongs to the endothelin/sarafotoxin family.,tissue specificity:Expressed in lung, placental stem villi vessels and in cultured placental vascular smooth muscle cells.,

## Research Area

Melanogenesis;

## Image Data



Western blot analysis of lysate from mouse lung, using EDN1 Antibody.



Western Blot analysis of mouse lung cells using ET-1 Polyclonal Antibody.. Secondary antibody was diluted at 1:20000

## Note

For research use only.