

Summary

Production Name	ERLIN1/2 Rabbit Polyclonal Antibody
Description	Rabbit Polyclonal Antibody
Host	Rabbit
Application	WB,IHC,
Reactivity	Human,Mouse,Rat

Performance

Conjugation	Unconjugated
Modification	Unmodified
Isotype	IgG
Clonality	Polyclonal
Form	Liquid
Storage	Store at 4°C short term. Aliquot and store at -20°C long term. Avoid freeze/thaw cycles.
Buffer	Liquid in PBS containing 50% glycerol, 0.5% BSA and 0.02% New type preservative N.
Purification	Affinity purification

Immunogen

Gene Name	ERLIN1/ERLIN2
Alternative Names	
Gene ID	
SwissProt ID	O75477/O94905.Synthesized peptide derived from ERLIN1/2 at AA range: 31-80

Application

Dilution Ratio	WB 1:500-2000 IHC 1:100 - 1:300. ELISA 1:10000-20000
Molecular Weight	40+42kD

Background

similarity:Belongs to the band 7/mec-2 family.,subcellular location:Associated with lipid raft-like domains of the

Product Name: ERLIN1/2 Rabbit Polyclonal Antibody
Catalog #: APRab10606



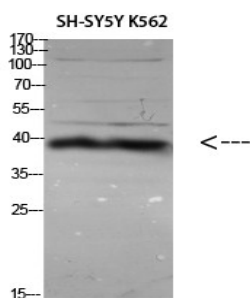
endoplasmic reticulum membrane.,tissue specificity:Expressed in heart, placenta, liver, kidney, pancreas, prostate, testis, ovary and small intestine.,similarity:Belongs to the band 7/mec-2 family.,subcellular location:Associated with lipid raft-like domains of the endoplasmic reticulum membrane.,tissue specificity:Expressed in heart, placenta, liver, kidney, pancreas, prostate, testis, ovary and small intestine.,

Research Area

Image Data

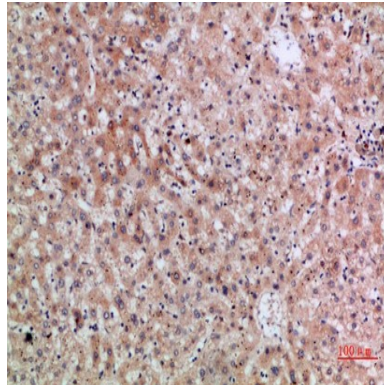


Western Blot analysis of HEPG2 3T3 HeLa cells using ERLIN1/2 Polyclonal Antibody diluted at 1:800. Secondary antibody was diluted at 1:20000

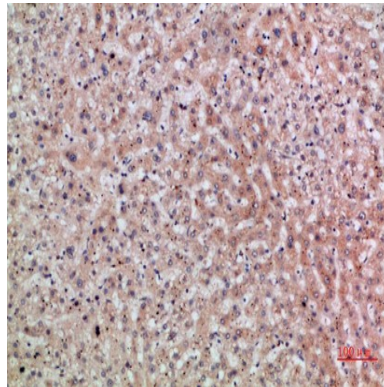


Western Blot analysis of various cells using Antibody diluted at 1:1000. Secondary antibody was diluted at 1:20000

Product Name: ERLIN1/2 Rabbit Polyclonal Antibody
Catalog #: APRab10606



Immunohistochemical analysis of paraffin-embedded human-liver, antibody was diluted at 1:200



Immunohistochemical analysis of paraffin-embedded human-liver, antibody was diluted at 1:200

Note

For research use only.