

Product Name: ERK 3 Rabbit Polyclonal Antibody
Catalog #: APRab10596



Summary

Production Name	ERK 3 Rabbit Polyclonal Antibody
Description	Rabbit Polyclonal Antibody
Host	Rabbit
Application	IF, WB, IHC, ELISA
Reactivity	Human, Mouse, Rat

Performance

Conjugation	Unconjugated
Modification	Unmodified
Isotype	IgG
Clonality	Polyclonal
Form	Liquid
Storage	Store at 4°C short term. Aliquot and store at -20°C long term. Avoid freeze/thaw cycles.
Buffer	Liquid in PBS containing 50% glycerol, 0.5% BSA and 0.02% New type preservative N.
Purification	Affinity purification

Immunogen

Gene Name	MAPK6
Alternative Names	MAPK6; ERK3; PRKM6; Mitogen-activated protein kinase 6; MAP kinase 6; MAPK 6; Extracellular signal-regulated kinase 3; ERK-3; MAP kinase isoform p97; p97-MAPK
Gene ID	5597.0
SwissProt ID	Q16659. The antiserum was produced against synthesized peptide derived from human p97 MAPK. AA range:461-510

Application

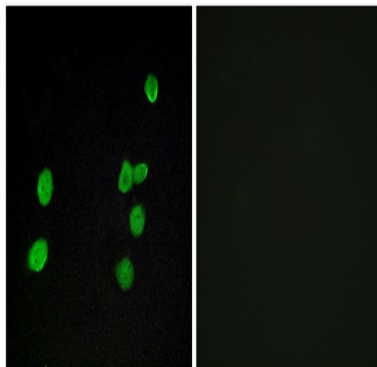
Dilution Ratio	WB 1:500 - 1:2000. IHC 1:100 - 1:300. IF 1:200 - 1:1000. ELISA: 1:10000. Not yet tested in other applications.
Molecular Weight	85kD

Background

The protein encoded by this gene is a member of the Ser/Thr protein kinase family, and is most closely related to mitogen-activated protein kinases (MAP kinases). MAP kinases also known as extracellular signal-regulated kinases (ERKs), are activated through protein phosphorylation cascades and act as integration points for multiple biochemical signals. This kinase is localized in the nucleus, and has been reported to be activated in fibroblasts upon treatment with serum or phorbol esters. [provided by RefSeq, Jul 2008],catalytic activity:ATP + a protein = ADP + a phosphoprotein.,cofactor:Magnesium.,domain:The TXY motif contains the threonine and tyrosine residues whose phosphorylation activates the MAP kinases.,enzyme regulation:Activated by threonine and tyrosine phosphorylation.,function:Phosphorylates microtubule-associated protein 2 (MAP2). May promote entry in the cell cycle.,PTM:Dually phosphorylated on Thr-626 and Tyr-628, which activates the enzyme.,similarity:Belongs to the protein kinase superfamily. CMGC Ser/Thr protein kinase family. MAP kinase subfamily.,similarity:Contains 1 protein kinase domain.,tissue specificity:Highest expression in the skeletal muscle, followed by the brain. Also found in heart, placenta, lung, liver, pancreas, kidney and skin fibroblasts.,

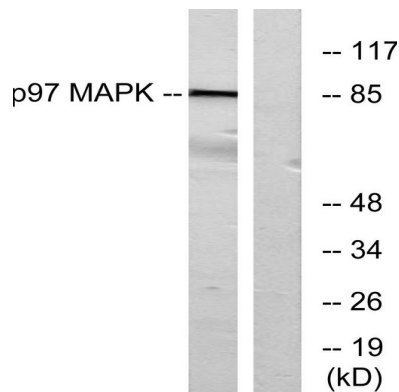
Research Area

Image Data

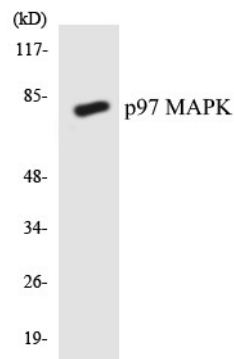


Immunofluorescence analysis of MCF7 cells, using p97 MAPK Antibody. The picture on the right is blocked with the synthesized peptide.

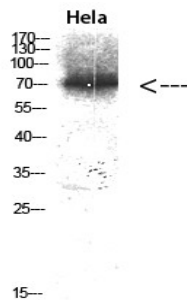
Product Name: ERK 3 Rabbit Polyclonal Antibody
Catalog #: APRab10596



Western blot analysis of lysates from K562 cells, using p97 MAPK Antibody. The lane on the right is blocked with the synthesized peptide.

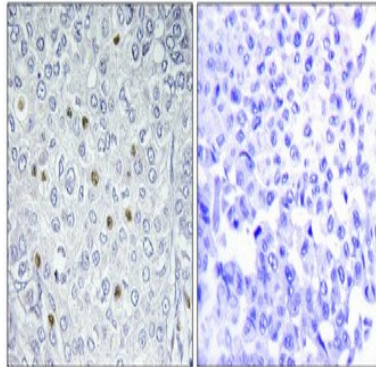


Western blot analysis of the lysates from HeLa cells using p97 MAPK antibody.



Western blot analysis of HeLa Lysate, antibody was diluted at 1:1000. Secondary antibody was diluted at 1:20000

Product Name: ERK 3 Rabbit Polyclonal Antibody
Catalog #: APRab10596



Immunohistochemical analysis of paraffin-embedded Human breast cancer. Antibody was diluted at 1:100 (4°,overnight) . High-pressure and temperature Tris-EDTA,pH8.0 was used for antigen retrieval. Negative contrl (right) obtaned from antibody was pre-absorbed by immunogen peptide.

Note

For research use only.