
Summary

Production Name	ERCC4 Rabbit Polyclonal Antibody
Description	Rabbit Polyclonal Antibody
Host	Rabbit
Application	WB,ELISA
Reactivity	Human,Mouse

Performance

Conjugation	Unconjugated
Modification	Unmodified
Isotype	IgG
Clonality	Polyclonal
Form	Liquid
Storage	Store at 4°C short term. Aliquot and store at -20°C long term. Avoid freeze/thaw cycles.
Buffer	Liquid in PBS containing 50% glycerol, 0.5% BSA and 0.02% New type preservative N.
Purification	Affinity purification

Immunogen

Gene Name	ERCC4 ERCC4; ERCC11; XPF; DNA repair endonuclease XPF; DNA excision repair protein ERCC-4; DNA repair protein complementing XP-F cells; Xeroderma pigmentosum group F-complementing protein
Alternative Names	
Gene ID	2072.0
SwissProt ID	Q92889.The antiserum was produced against synthesized peptide derived from human XPF. AA range:801-850

Application

Dilution Ratio	WB 1:500 - 1:2000. ELISA: 1:10000. Not yet tested in other applications.
Molecular Weight	103kD

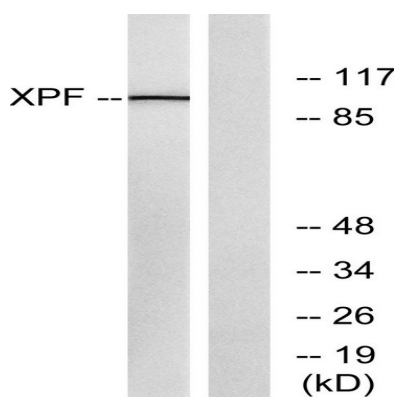
Background

The protein encoded by this gene forms a complex with ERCC1 and is involved in the 5' incision made during nucleotide excision repair. This complex is a structure specific DNA repair endonuclease that interacts with EME1. Defects in this gene are a cause of xeroderma pigmentosum complementation group F (XP-F), or xeroderma pigmentosum VI (XP6). [provided by RefSeq, Mar 2009], cofactor: Magnesium., disease: Defects in ERCC4 are a cause of XFE progeroid syndrome [MIM:610965]. This syndrome is illustrated by one patient who presented with dwarfism, cachexia and microcephaly., disease: Defects in ERCC4 are the cause of xeroderma pigmentosum complementation group F (XP-F) [MIM:278760]; also known as xeroderma pigmentosum VI (XP6). XP-F is an autosomal recessive disease characterized by hypersensitivity of the skin to sunlight followed by high incidence of skin cancer and frequent neurologic abnormalities., function: Structure-specific DNA repair endonuclease responsible for the 5-prime incision during DNA repair. Involved in homologous recombination that assists in removing interstrand cross-link., similarity: Belongs to the XPF family., subunit: Heterodimer composed of ERCC1 and XPF/ERCC4. Interacts with EME1.,

Research Area

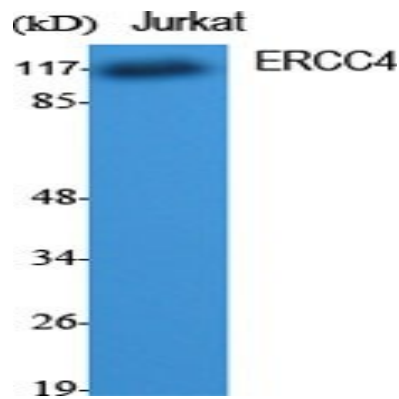
Nucleotide excision repair;

Image Data

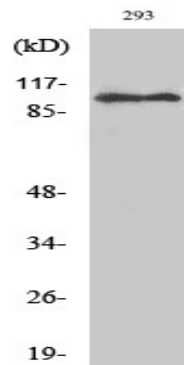


Western blot analysis of lysates from 293 cells, using XPF Antibody. The lane on the right is blocked with the synthesized peptide.

Product Name: ERCC4 Rabbit Polyclonal Antibody
Catalog #: APRab10581



Western Blot analysis of various cells using ERCC4 Polyclonal Antibody cells nucleus extracted by Minute TM Cytoplasmic and Nuclear Fractionation kit (SC-003, Inventbiotech, MN, USA) .



Western Blot analysis of 293 cells using ERCC4 Polyclonal Antibody cells nucleus extracted by Minute TM Cytoplasmic and Nuclear Fractionation kit (SC-003, Inventbiotech, MN, USA) .

Note

For research use only.