

Product Name: Epsin 2 Rabbit Polyclonal Antibody
Catalog #: APRab10555



Summary

| | |
|------------------------|------------------------------------|
| Production Name | Epsin 2 Rabbit Polyclonal Antibody |
| Description | Rabbit Polyclonal Antibody |
| Host | Rabbit |
| Application | WB,ELISA |
| Reactivity | Human,Mouse,Rat |

Performance

| | |
|---------------------|--|
| Conjugation | Unconjugated |
| Modification | Unmodified |
| Isotype | IgG |
| Clonality | Polyclonal |
| Form | Liquid |
| Storage | Store at 4°C short term. Aliquot and store at -20°C long term. Avoid freeze/thaw cycles. |
| Buffer | Liquid in PBS containing 50% glycerol, 0.5% BSA and 0.02% New type preservative N. |
| Purification | Affinity purification |

Immunogen

| | |
|--------------------------|---|
| Gene Name | EPN2 |
| Alternative Names | EPN2; KIAA1065; Epsin-2; EPS-15-interacting protein 2 |
| Gene ID | 22905.0 |
| SwissProt ID | O95208.The antiserum was produced against synthesized peptide derived from human EPN2. AA range:271-320 |

Application

| | |
|-------------------------|-----------------------------------|
| Dilution Ratio | WB 1:500 - 1:2000. ELISA: 1:20000 |
| Molecular Weight | 68kD |

Background

Product Name: Epsin 2 Rabbit Polyclonal Antibody
Catalog #: APRab10555

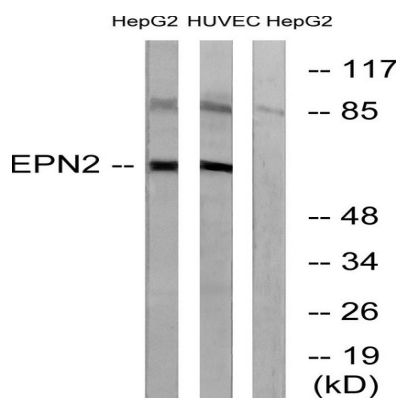


This gene encodes a protein which interacts with clathrin and adaptor-related protein complex 2, alpha 1 subunit. The protein is found in a brain-derived clathrin-coated vesicle fraction and localizes to the peri-Golgi region and the cell periphery. The protein is thought to be involved in clathrin-mediated endocytosis. Alternate splicing of this gene results in multiple transcript variants encoding different isoforms. [provided by RefSeq, Jul 2008],caution:The sequence shown here is derived from an Ensembl automatic analysis pipeline and should be considered as preliminary data.,domain:The DPW repeat domain is involved in AP-2 and clathrin binding.,domain:The NPF repeat domain is involved in EPS15 binding.,function:Plays a role in the formation of clathrin-coated invaginations and endocytosis.,PTM:Ubiquitinated.,similarity:Belongs to the epsin family.,similarity:Contains 1 ENTH (epsin N-terminal homology) domain.,similarity:Contains 2 UIM (ubiquitin-interacting motif) repeats.,subcellular location:In punctate structures throughout the cell, associated with clathrin-coated vesicles, and particularly concentrated in the region of the Golgi complex.,subunit:Binds EPS15 (By similarity). Binds AP-2 and clathrin.,tissue specificity:Highest expression is found in brain. Detected at lower levels in lung and liver.,

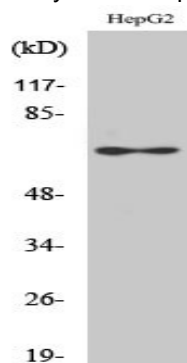
Research Area

Endocytosis;

Image Data



Western blot analysis of lysates from HepG2 and HUVEC cells, using EPN2 Antibody. The lane on the right is blocked with the synthesized peptide.



Product Name: Epsin 2 Rabbit Polyclonal Antibody
Catalog #: APRab10555



Western Blot analysis of various cells using Epsin 2 Polyclonal Antibody diluted at 1: 1000

Note

For research use only.