
Summary

Production Name	Eps8L1 Rabbit Polyclonal Antibody
Description	Rabbit Polyclonal Antibody
Host	Rabbit
Application	IHC,WB,ELISA
Reactivity	Human,Mouse

Performance

Conjugation	Unconjugated
Modification	Unmodified
Isotype	IgG
Clonality	Polyclonal
Form	Liquid
Storage	Store at 4°C short term. Aliquot and store at -20°C long term. Avoid freeze/thaw cycles.
Buffer	Liquid in PBS containing 50% glycerol, 0.5% BSA and 0.02% New type preservative N.
Purification	Affinity purification

Immunogen

Gene Name	EPS8L1 EPS8L1; DRC3; EPS8R1; PP10566; Epidermal growth factor receptor kinase substrate 8-
Alternative Names	like protein 1; EPS8-like protein 1; Epidermal growth factor receptor pathway substrate 8-related protein 1; EPS8-related protein 1
Gene ID	54869.0
SwissProt ID	Q8TE68.The antiserum was produced against synthesized peptide derived from human ES8L1. AA range:411-460

Application

Dilution Ratio	WB 1:500 - 1:2000. IHC 1:100 - 1:300. ELISA: 1:20000. Not yet tested in other applications.
-----------------------	---

Product Name: Eps8L1 Rabbit Polyclonal Antibody
Catalog #: APRab10548



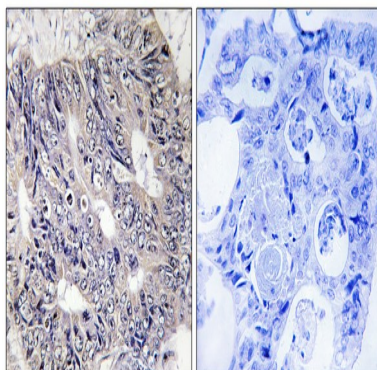
Molecular Weight 80kD

Background

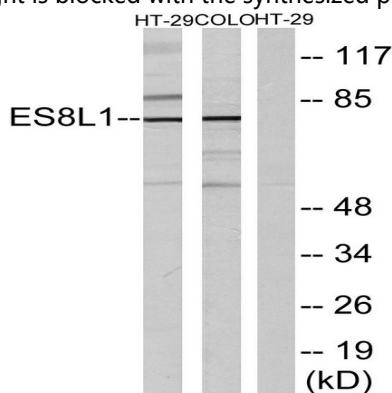
This gene encodes a protein that is related to epidermal growth factor receptor pathway substrate 8 (EPS8), a substrate for the epidermal growth factor receptor. The function of this protein is unknown. At least two alternatively spliced transcript variants encoding different isoforms have been found for this gene. [provided by RefSeq, Jul 2008],function:Stimulates guanine exchange activity of SOS1. May play a role in membrane ruffling and remodeling of the actin cytoskeleton.,similarity:Belongs to the EPS8 family.,similarity:Contains 1 SH3 domain.,subunit:Interacts with ABI1. Part of a complex that contains SOS1, ABI1 and EPS8L2. Associates with F-actin.,tissue specificity:Detected in placenta.,

Research Area

Image Data

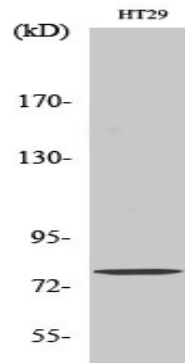


Immunohistochemistry analysis of paraffin-embedded human colon carcinoma tissue, using Eps8L1 Antibody. The picture on the right is blocked with the synthesized peptide.



Western blot analysis of lysates from COLO205 and HT-29 cells, using Eps8L1 Antibody. The lane on the right is blocked with the synthesized peptide.

Product Name: Eps8L1 Rabbit Polyclonal Antibody
Catalog #: APRab10548



Western Blot analysis of various cells using Eps8L1 Polyclonal Antibody

Note

For research use only.