

## Summary

<b>Production Name</b>	Ephrin-B3 Rabbit Polyclonal Antibody
<b>Description</b>	Rabbit Polyclonal Antibody
<b>Host</b>	Rabbit
<b>Application</b>	IHC, WB, ELISA
<b>Reactivity</b>	Human, Mouse, Rat

## Performance

<b>Conjugation</b>	Unconjugated
<b>Modification</b>	Unmodified
<b>Isotype</b>	IgG
<b>Clonality</b>	Polyclonal
<b>Form</b>	Liquid
<b>Storage</b>	Store at 4°C short term. Aliquot and store at -20°C long term. Avoid freeze/thaw cycles.
<b>Buffer</b>	Liquid in PBS containing 50% glycerol, 0.5% BSA and 0.02% New type preservative N.
<b>Purification</b>	Affinity purification

## Immunogen

<b>Gene Name</b>	EFNB3
<b>Alternative Names</b>	EFNB3; EPLG8; LERK8; Ephrin-B3; EPH-related receptor transmembrane ligand ELK-L3; EPH-related receptor tyrosine kinase ligand 8; LERK-8
<b>Gene ID</b>	1949.0
<b>SwissProt ID</b>	Q15768. The antiserum was produced against synthesized peptide derived from human EFNB3. AA range:221-270

## Application

<b>Dilution Ratio</b>	WB 1:500 - 1:2000. IHC 1:100 - 1:300. ELISA: 1:20000..
<b>Molecular Weight</b>	36kD

**Product Name: Ephrin-B3 Rabbit Polyclonal Antibody**  
**Catalog #: APRab10541**



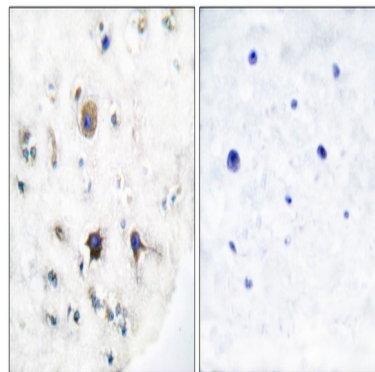
## Background

EFNB3, a member of the ephrin gene family, is important in brain development as well as in its maintenance. Moreover, since levels of EFNB3 expression were particularly high in several forebrain subregions compared to other brain subregions, it may play a pivotal role in forebrain function. The EPH and EPH-related receptors comprise the largest subfamily of receptor protein-tyrosine kinases and have been implicated in mediating developmental events, particularly in the nervous system. EPH Receptors typically have a single kinase domain and an extracellular region containing a Cys-rich domain and 2 fibronectin type III repeats. The ephrin ligands and receptors have been named by the Eph Nomenclature Committee (1997). Based on their structures and sequence relationships, ephrins are divided into the ephrin-A (EFNA) class, which are anchored to the membrane by a glycosylphosphatidylinositol linkage, and the function: May play a pivotal role in forebrain function. Binds to, and induce the collapse of, commissural axons/growth cones in vitro. May play a role in constraining the orientation of longitudinally projecting axons., similarity: Belongs to the ephrin family., subunit: Interacts with GRIP1 and GRIP2. Binds to Nipah virus G protein., tissue specificity: Highly expressed in brain; expressed in embryonic floor plate, roof plate and hindbrain segments.,

## Research Area

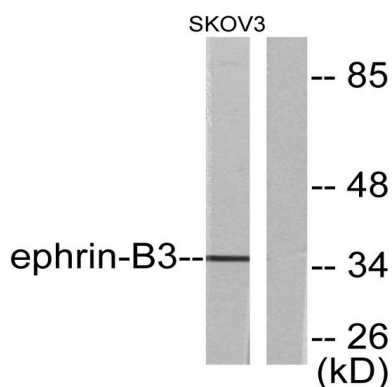
Axon guidance;

## Image Data

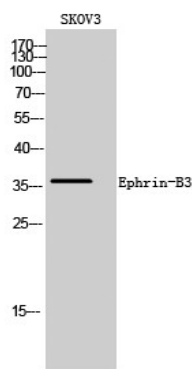


Immunohistochemistry analysis of paraffin-embedded human brain tissue, using EFNB3 Antibody. The picture on the right is blocked with the synthesized peptide.

**Product Name: Ephrin-B3 Rabbit Polyclonal Antibody**  
**Catalog #: APRab10541**



Western blot analysis of lysates from SKOV3 cells, using EFNB3 Antibody. The lane on the right is blocked with the synthesized peptide.



Western Blot analysis of SKOV3 cells using Ephrin-B3 Polyclonal Antibody

## **Note**

For research use only.