
Summary

Production Name	Ephrin-A2 Rabbit Polyclonal Antibody
Description	Rabbit Polyclonal Antibody
Host	Rabbit
Application	WB,ELISA
Reactivity	Human,Mouse

Performance

Conjugation	Unconjugated
Modification	Unmodified
Isotype	IgG
Clonality	Polyclonal
Form	Liquid
Storage	Store at 4°C short term. Aliquot and store at -20°C long term. Avoid freeze/thaw cycles.
Buffer	Liquid in PBS containing 50% glycerol, 0.5% BSA and 0.02% New type preservative N.
Purification	Affinity purification

Immunogen

Gene Name	EFNA2
Alternative Names	EFNA2; EPLG6; LERK6; Ephrin-A2; EPH-related receptor tyrosine kinase ligand 6; LERK-6; HEK7 ligand; HEK7-L
Gene ID	1943.0
SwissProt ID	O43921.The antiserum was produced against synthesized peptide derived from human EFNA2. AA range:1-50

Application

Dilution Ratio	WB 1:500 - 1:2000. ELISA: 1:20000
Molecular Weight	24kD

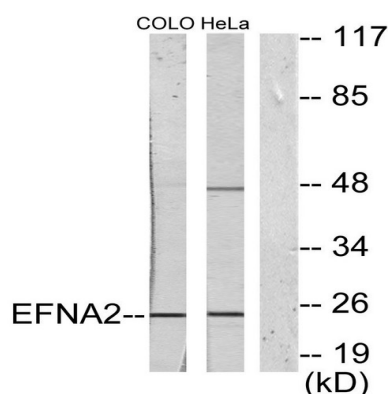
Background

This gene encodes a member of the ephrin family. The protein is composed of a signal sequence, a receptor-binding region, a spacer region, and a hydrophobic region. The EPH and EPH-related receptors comprise the largest subfamily of receptor protein-tyrosine kinases and have been implicated in mediating developmental events, particularly in the nervous system. Based on their structures and sequence relationships, ephrins are divided into the ephrin-A (EFNA) class, which are anchored to the membrane by a glycosylphosphatidylinositol linkage, and the ephrin-B (EFNB) class, which are transmembrane proteins. Posttranslational modifications determine whether this protein localizes to the nucleus or the cytoplasm. [provided by RefSeq, Jul 2008],similarity:Belongs to the ephrin family.,subunit:Binds to the receptor tyrosine kinases EPHA3, EPHA4 and EPHA5,

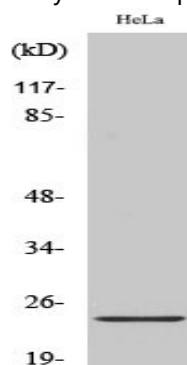
Research Area

Axon guidance;

Image Data



Western blot analysis of lysates from HeLa and COLO205 cells, using EFNA2 Antibody. The lane on the right is blocked with the synthesized peptide.



Western Blot analysis of various cells using Ephrin-A2 Polyclonal Antibody

Product Name: Ephrin-A2 Rabbit Polyclonal Antibody
Catalog #: APRab10534



Note

For research use only.