

## Summary

<b>Production Name</b>	EphB4 Rabbit Polyclonal Antibody
<b>Description</b>	Rabbit Polyclonal Antibody
<b>Host</b>	Rabbit
<b>Application</b>	WB,ELISA
<b>Reactivity</b>	Human,Mouse

## Performance

<b>Conjugation</b>	Unconjugated
<b>Modification</b>	Unmodified
<b>Isotype</b>	IgG
<b>Clonality</b>	Polyclonal
<b>Form</b>	Liquid
<b>Storage</b>	Store at 4°C short term. Aliquot and store at -20°C long term. Avoid freeze/thaw cycles.
<b>Buffer</b>	Liquid in PBS containing 50% glycerol, 0.5% BSA and 0.02% New type preservative N.
<b>Purification</b>	Affinity purification

## Immunogen

<b>Gene Name</b>	EPHB4
<b>Alternative Names</b>	EPHB4; HTK; MYK1; TYRO11; Ephrin type-B receptor 4; Hepatoma transmembrane kinase; Tyrosine-protein kinase TYRO11
<b>Gene ID</b>	2050.0
<b>SwissProt ID</b>	P54760.The antiserum was produced against synthesized peptide derived from human EPHB4. AA range:571-620

## Application

<b>Dilution Ratio</b>	WB 1:500 - 1:2000. ELISA: 1:20000
<b>Molecular Weight</b>	108kD

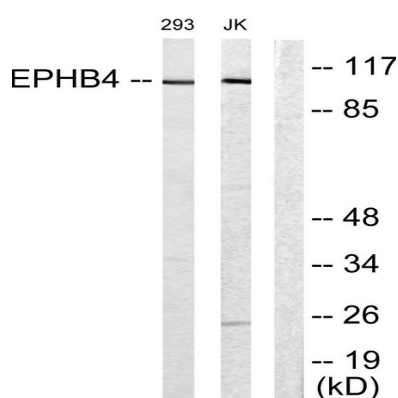
## Background

Ephrin receptors and their ligands, the ephrins, mediate numerous developmental processes, particularly in the nervous system. Based on their structures and sequence relationships, ephrins are divided into the ephrin-A (EFNA) class, which are anchored to the membrane by a glycosylphosphatidylinositol linkage, and the ephrin-B (EFNB) class, which are transmembrane proteins. The Eph family of receptors are divided into 2 groups based on the similarity of their extracellular domain sequences and their affinities for binding ephrin-A and ephrin-B ligands. Ephrin receptors make up the largest subgroup of the receptor tyrosine kinase (RTK) family. The protein encoded by this gene binds to ephrin-B2 and plays an essential role in vascular development. [provided by RefSeq, Jul 2008],catalytic activity:ATP + a [protein]-L-tyrosine = ADP + a [protein]-L-tyrosine phosphate.,function:Receptor for members of the ephrin-B family. Binds to ephrin-B2. May have a role in events mediating differentiation and development.,PTM:Autophosphorylated.,similarity:Belongs to the protein kinase superfamily. Tyr protein kinase family.,similarity:Belongs to the protein kinase superfamily. Tyr protein kinase family. Ephrin receptor subfamily.,similarity:Contains 1 protein kinase domain.,similarity:Contains 1 SAM (sterile alpha motif) domain.,similarity:Contains 2 fibronectin type-III domains.,tissue specificity:Abundantly expressed in placenta and in a range of primary tissues and malignant cell lines. Expressed in fetal, but not adult, brain, and in primitive and myeloid, but not lymphoid, hematopoietic cells.,

## Research Area

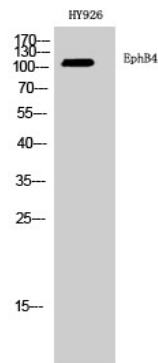
Axon guidance;

## Image Data



Western blot analysis of lysates from Jurkat and 293 cells, using EPHB4 Antibody. The lane on the right is blocked with the synthesized peptide.

**Product Name: EphB4 Rabbit Polyclonal Antibody**  
**Catalog #: APRab10529**



Western Blot analysis of HY926 cells using EphB4 Polyclonal Antibody diluted at 1 : 2000

**Note**

For research use only.