

Summary

Production Name	EphA7 Rabbit Polyclonal Antibody
Description	Rabbit Polyclonal Antibody
Host	Rabbit
Application	WB,ELISA
Reactivity	Human,Mouse,Rat

Performance

Conjugation	Unconjugated
Modification	Unmodified
Isotype	IgG
Clonality	Polyclonal
Form	Liquid
Storage	Store at 4°C short term. Aliquot and store at -20°C long term. Avoid freeze/thaw cycles.
Buffer	Liquid in PBS containing 50% glycerol, 0.5% BSA and 0.02% New type preservative N.
Purification	Affinity purification

Immunogen

Gene Name	EPHA7
Alternative Names	EPHA7; EHK3; HEK11; Ephrin type-A receptor 7; EPH homology kinase 3; EHK-3; EPH-like kinase 11; EK11; hEK11
Gene ID	2045.0
SwissProt ID	Q15375.The antiserum was produced against synthesized peptide derived from human EPHA7. AA range:451-500

Application

Dilution Ratio	WB 1:500 - 1:2000. ELISA: 1:40000..
Molecular Weight	112kD

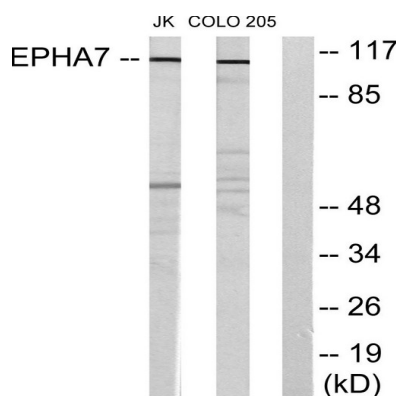
Background

This gene belongs to the ephrin receptor subfamily of the protein-tyrosine kinase family. EPH and EPH-related receptors have been implicated in mediating developmental events, particularly in the nervous system. Receptors in the EPH subfamily typically have a single kinase domain and an extracellular region containing a Cys-rich domain and 2 fibronectin type III repeats. The ephrin receptors are divided into 2 groups based on the similarity of their extracellular domain sequences and their affinities for binding ephrin-A and ephrin-B ligands. Increased expression of this gene is associated with multiple forms of carcinoma. Alternative splicing results in multiple transcript variants. [provided by RefSeq, Dec 2013],catalytic activity:ATP + a [protein]-L-tyrosine = ADP + a [protein]-L-tyrosine phosphate.,function:Receptor for members of the ephrin-A family. Binds to ephrin-A1, -A2, -A3, -A4 and -A5.,similarity:Belongs to the protein kinase superfamily. Tyr protein kinase family. Ephrin receptor subfamily.,similarity:Contains 1 protein kinase domain.,similarity:Contains 1 SAM (sterile alpha motif) domain.,similarity:Contains 2 fibronectin type-III domains.,subunit:Interacts with PRKCABP and GRIP1.,tissue specificity:Widely expressed.,

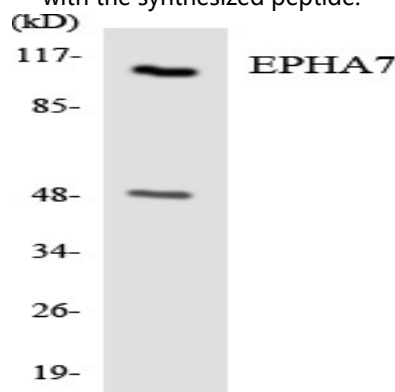
Research Area

Axon guidance;

Image Data



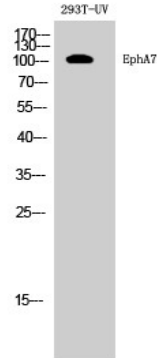
Western blot analysis of lysates from Jurkat cells and COLO205 cells, using EPHA7 Antibody. The lane on the right is blocked with the synthesized peptide.



Product Name: EphA7 Rabbit Polyclonal Antibody
Catalog #: APRab10522



Western blot analysis of the lysates from HeLa cells using EPHA7 antibody.



Western Blot analysis of 293T-UV cells using EphA7 Polyclonal Antibody diluted at 1: 500

Note

For research use only.