
Summary

Production Name	EP4 Rabbit Polyclonal Antibody
Description	Rabbit Polyclonal Antibody
Host	Rabbit
Application	IF, WB, ELISA
Reactivity	Human, Rat, Mouse

Performance

Conjugation	Unconjugated
Modification	Unmodified
Isotype	IgG
Clonality	Polyclonal
Form	Liquid
Storage	Store at 4°C short term. Aliquot and store at -20°C long term. Avoid freeze/thaw cycles.
Buffer	Liquid in PBS containing 50% glycerol, 0.5% BSA and 0.02% New type preservative N.
Purification	Affinity purification

Immunogen

Gene Name	PTGER4
Alternative Names	PTGER4; PTGER2; Prostaglandin E2 receptor EP4 subtype; PGE receptor EP4 subtype; PGE2 receptor EP4 subtype; Prostanoid EP4 receptor
Gene ID	5734.0
SwissProt ID	P35408. The antiserum was produced against synthesized peptide derived from human PE2R4. AA range:321-370

Application

Dilution Ratio	WB 1:500 - 1:2000. IF 1:200 - 1:1000. ELISA: 1:20000. Not yet tested in other applications.
Molecular Weight	55kD

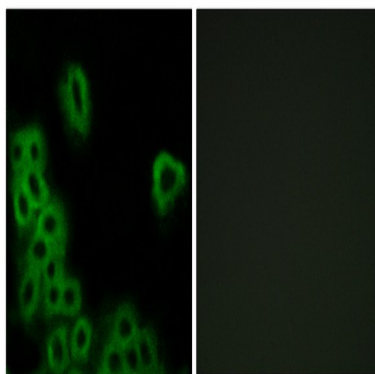
Background

The protein encoded by this gene is a member of the G-protein coupled receptor family. This protein is one of four receptors identified for prostaglandin E2 (PGE2). This receptor can activate T-cell factor signaling. It has been shown to mediate PGE2 induced expression of early growth response 1 (EGR1), regulate the level and stability of cyclooxygenase-2 mRNA, and lead to the phosphorylation of glycogen synthase kinase-3. Knockout studies in mice suggest that this receptor may be involved in the neonatal adaptation of circulatory system, osteoporosis, as well as initiation of skin immune responses. [provided by RefSeq, Jul 2008],caution:Was originally designated as the EP2 subtype.,function:Receptor for prostaglandin E2 (PGE2). The activity of this receptor is mediated by G(s) proteins that stimulate adenylate cyclase. Has a relaxing effect on smooth muscle. May play an important role in regulating renal hemodynamics, intestinal epithelial transport, adrenal aldosterone secretion, and uterine function.,similarity:Belongs to the G-protein coupled receptor 1 family.,subunit:Interacts with FEM1A.,tissue specificity:High in intestine and in peripheral blood mononuclear cells; low in lung, kidney, thymus, uterus, vasculature and brain. Not found in liver, heart, retina or skeletal muscle.,

Research Area

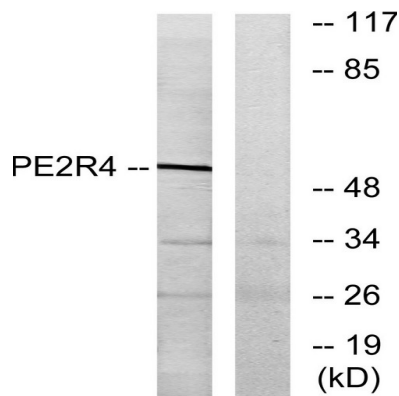
Neuroactive ligand-receptor interaction;

Image Data

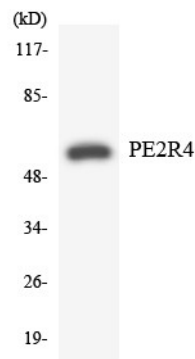


Immunofluorescence analysis of MCF7 cells, using PE2R4 Antibody. The picture on the right is blocked with the synthesized peptide.

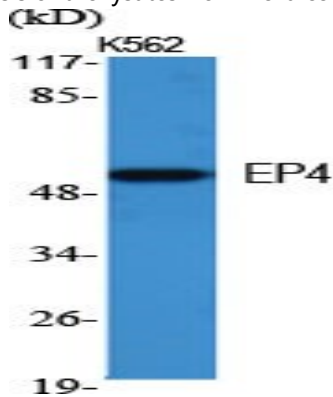
Product Name: EP4 Rabbit Polyclonal Antibody
Catalog #: APRab10498



Western blot analysis of lysates from COLO205 cells, using PE2R4 Antibody. The lane on the right is blocked with the synthesized peptide.

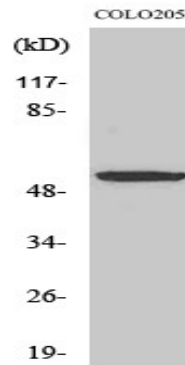


Western blot analysis of the lysates from HeLa cells using PE2R4 antibody.



Western Blot analysis of various cells using EP4 Polyclonal Antibody

Product Name: EP4 Rabbit Polyclonal Antibody
Catalog #: APRab10498



Western Blot analysis of COLO205 cells using EP4 Polyclonal Antibody

Note

For research use only.