

---

## Summary

<b>Production Name</b>	EP2 Rabbit Polyclonal Antibody
<b>Description</b>	Rabbit Polyclonal Antibody
<b>Host</b>	Rabbit
<b>Application</b>	WB,ELISA
<b>Reactivity</b>	Human,Mouse,Rat

## Performance

<b>Conjugation</b>	Unconjugated
<b>Modification</b>	Unmodified
<b>Isotype</b>	IgG
<b>Clonality</b>	Polyclonal
<b>Form</b>	Liquid
<b>Storage</b>	Store at 4°C short term. Aliquot and store at -20°C long term. Avoid freeze/thaw cycles.
<b>Buffer</b>	Liquid in PBS containing 50% glycerol, 0.5% BSA and 0.02% New type preservative N.
<b>Purification</b>	Affinity purification

## Immunogen

<b>Gene Name</b>	PTGER2
<b>Alternative Names</b>	PTGER2; Prostaglandin E2 receptor EP2 subtype; PGE receptor EP2 subtype; PGE2 receptor EP2 subtype; Prostanoid EP2 receptor
<b>Gene ID</b>	5732.0
<b>SwissProt ID</b>	P43116.The antiserum was produced against synthesized peptide derived from human PE2R2. AA range:261-310

## Application

<b>Dilution Ratio</b>	WB 1:500 - 1:2000. ELISA: 1:10000. Not yet tested in other applications.
<b>Molecular Weight</b>	40kD

**Product Name: EP2 Rabbit Polyclonal Antibody**  
**Catalog #: APRab10493**



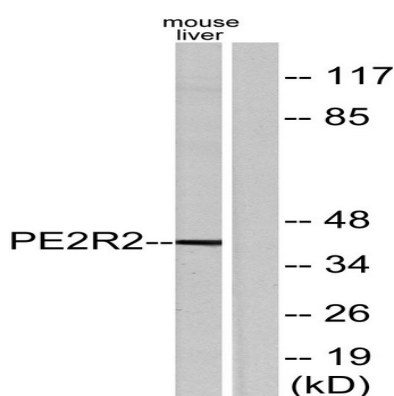
## Background

This gene encodes a receptor for prostaglandin E<sub>2</sub>, a metabolite of arachidonic acid which has different biologic activities in a wide range of tissues. Mutations in this gene are associated with aspirin-induced susceptibility to asthma. [provided by RefSeq, Oct 2009],function:Receptor for prostaglandin E<sub>2</sub> (PGE<sub>2</sub>). The activity of this receptor is mediated by G(s) proteins that stimulate adenylate cyclase. The subsequent raise in intracellular cAMP is responsible for the relaxing effect of this receptor on smooth muscle.,similarity:Belongs to the G-protein coupled receptor 1 family.,tissue specificity:Placenta and lung.,

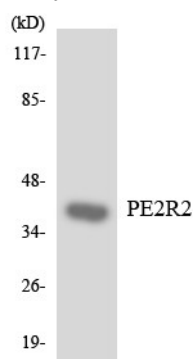
## Research Area

Neuroactive ligand-receptor interaction;

## Image Data

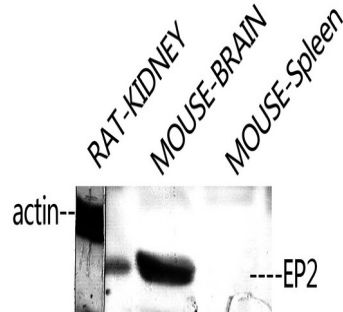


Western blot analysis of lysates from mouse liver, using PE2R2 Antibody. The lane on the right is blocked with the synthesized peptide.



Western blot analysis of the lysates from 293 cells using PE2R2 antibody.

**Product Name: EP2 Rabbit Polyclonal Antibody**  
**Catalog #: APRab10493**



Western Blot analysis of RAT-KIDNEY MOUSE-BRAIN MOUSE-HEART using EP2 Polyclonal Antibody. Antibody was diluted at 1:2000

**Note**

For research use only.