

Product Name: EP1 Rabbit Polyclonal Antibody
Catalog #: APRab10491



Summary

Production Name	EP1 Rabbit Polyclonal Antibody
Description	Rabbit Polyclonal Antibody
Host	Rabbit
Application	WB
Reactivity	Human,Rat,Mouse

Performance

Conjugation	Unconjugated
Modification	Unmodified
Isotype	IgG
Clonality	Polyclonal
Form	Liquid
Storage	Store at 4°C short term. Aliquot and store at -20°C long term. Avoid freeze/thaw cycles.
Buffer	Liquid in PBS containing 50% glycerol, 0.5% BSA and 0.02% New type preservative N.
Purification	Affinity purification

Immunogen

Gene Name	PTGER1
Alternative Names	PTGER1; Prostaglandin E2 receptor EP1 subtype; PGE receptor EP1 subtype; PGE2 receptor EP1 subtype; Prostanoid EP1 receptor
Gene ID	5731.0
SwissProt ID	P34995.The antiserum was produced against synthesized peptide derived from the Internal region of human PTGER1. AA range:191-240

Application

Dilution Ratio	WB 1:500-1:2000. ELISA: 1:20000.
Molecular Weight	44kD

Background

Product Name: EP1 Rabbit Polyclonal Antibody
Catalog #: APRab10491

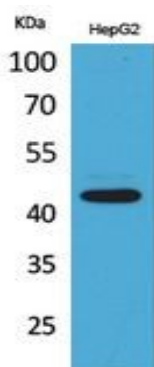


The protein encoded by this gene is a member of the G protein-coupled receptor family. This protein is one of four receptors identified for prostaglandin E2 (PGE2). Through a phosphatidylinositol-calcium second messenger system, G-Q proteins mediate this receptor's activity. Knockout studies in mice suggested a role of this receptor in mediating algisia and in regulation of blood pressure. Studies in mice also suggested that this gene may mediate adrenocorticotropic hormone response to bacterial endotoxin. [provided by RefSeq, Jul 2008],function:Receptor for prostaglandin E2 (PGE2). The activity of this receptor is mediated by G(q) proteins which activate a phosphatidylinositol-calcium second messenger system. May play a role as an important modulator of renal function. Implicated the smooth muscle contractile response to PGE2 in various tissues.,PTM:Phosphorylated ,similarity:Belongs to the G-protein coupled receptor 1 family.,tissue specificity:Abundant in kidney. Lower level expression in lung, skeletal muscle and spleen, lowest expression in testis and not detected in liver brain and heart.,

Research Area

Calcium;Neuroactive ligand-receptor interaction;

Image Data



Western Blot analysis of HepG2 cells using EP1 Polyclonal Antibody.. Secondary antibody was diluted at 1:20000

Note

For research use only.