

## Summary

<b>Production Name</b>	Eotaxin-3 Rabbit Polyclonal Antibody
<b>Description</b>	Rabbit Polyclonal Antibody
<b>Host</b>	Rabbit
<b>Application</b>	WB,IHC,IF,ELISA
<b>Reactivity</b>	Human,Rat,Mouse

## Performance

<b>Conjugation</b>	Unconjugated
<b>Modification</b>	Unmodified
<b>Isotype</b>	IgG
<b>Clonality</b>	Polyclonal
<b>Form</b>	Liquid
<b>Storage</b>	Store at 4°C short term. Aliquot and store at -20°C long term. Avoid freeze/thaw cycles.
<b>Buffer</b>	Liquid in PBS containing 50% glycerol, 0.5% BSA and 0.02% New type preservative N.
<b>Purification</b>	Affinity purification

## Immunogen

<b>Gene Name</b>	CCL26 CCL26; SCYA26; C-C motif chemokine 26; CC chemokine IMAC; Eotaxin-3; Macrophage inflammatory protein 4-alpha; MIP-4-alpha; Small-inducible cytokine A26; Thymic stroma chemokine-1; TSC-1
<b>Alternative Names</b>	
<b>Gene ID</b>	10344.0
<b>SwissProt ID</b>	Q9Y258.The antiserum was produced against synthesized peptide derived from the Internal region of human CCL26. AA range:31-80

## Application

<b>Dilution Ratio</b>	WB 1:500 - 1:2000. IHC-p: 1:100-300 ELISA: 1:20000.. IF 1:50-200
<b>Molecular Weight</b>	12kD

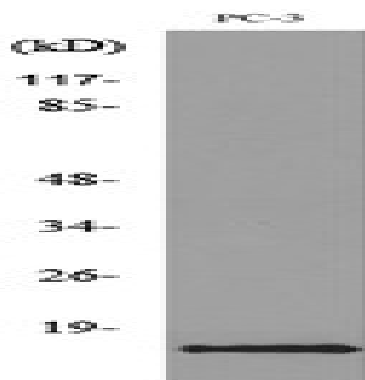
## Background

This gene is one of two Cys-Cys (CC) cytokine genes clustered on the q arm of chromosome 7. Cytokines are a family of secreted proteins involved in immunoregulatory and inflammatory processes. The CC cytokines are proteins characterized by two adjacent cysteines. The cytokine encoded by this gene displays chemotactic activity for normal peripheral blood eosinophils and basophils. The product of this gene is one of three related chemokines that specifically activate chemokine receptor CCR3. This chemokine may contribute to the eosinophil accumulation in atopic diseases. [provided by RefSeq, Jul 2008],function:Chemotactic for eosinophils and basophils. Binds to CCR3.,online information:CCL26 entry,similarity:Belongs to the intercrine beta (chemokine CC) family.,subunit:Monomer.,tissue specificity:Ubiquitously expressed at low levels in various tissues including heart and ovary.,

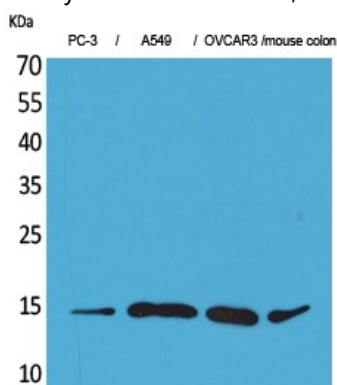
## Research Area

Cytokine-cytokine receptor interaction;Chemokine;

## Image Data

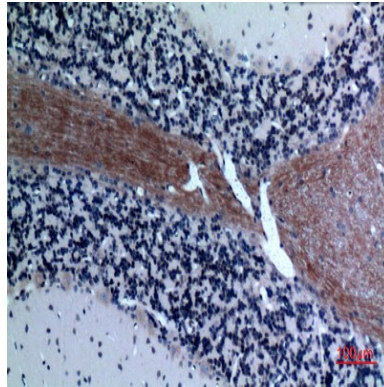


Western blot analysis of lysate from PC-3 cells, using CCL26 Antibody.

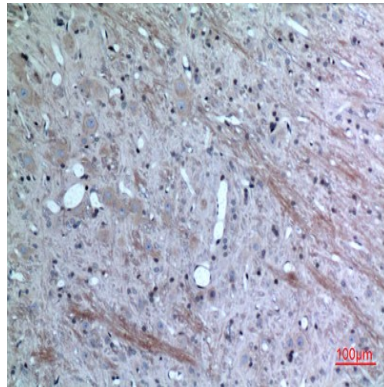


Western Blot analysis of PC-3, A549, OVCAR3, mouse colon cells using Eotaxin-3 Polyclonal Antibody.. Secondary antibody was diluted at 1:20000

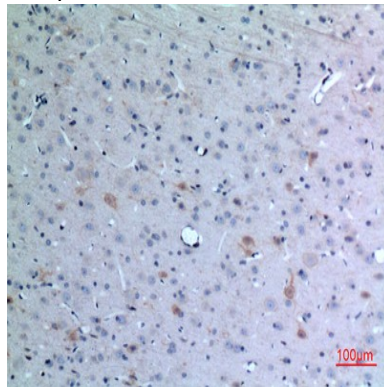
**Product Name: Eotaxin-3 Rabbit Polyclonal Antibody**  
**Catalog #: APRab10490**



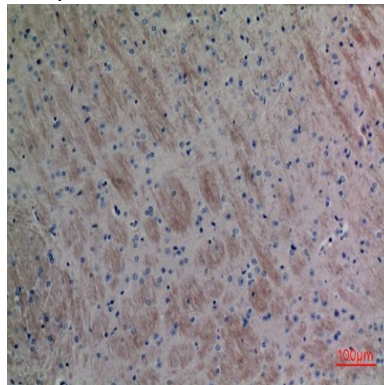
Immunohistochemical analysis of paraffin-embedded rat-brain, antibody was diluted at 1:100



Immunohistochemical analysis of paraffin-embedded rat-brain, antibody was diluted at 1:100



Immunohistochemical analysis of paraffin-embedded rat-brain, antibody was diluted at 1:100

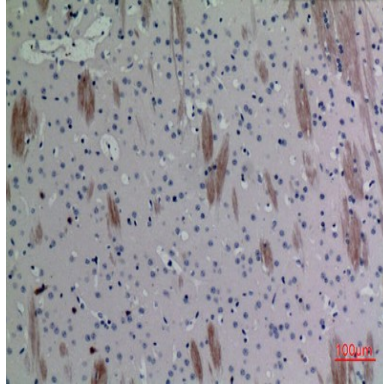


**Product Name: Eotaxin-3 Rabbit Polyclonal Antibody**  
**Catalog #: APRab10490**



---

Immunohistochemical analysis of paraffin-embedded mouse-brain, antibody was diluted at 1:100



Immunohistochemical analysis of paraffin-embedded mouse-brain, antibody was diluted at 1:100

**Note**

For research use only.