

---

## Summary

<b>Production Name</b>	Eotaxin-2 Rabbit Polyclonal Antibody
<b>Description</b>	Rabbit Polyclonal Antibody
<b>Host</b>	Rabbit
<b>Application</b>	IHC,ELISA
<b>Reactivity</b>	Human,Rat,Mouse

## Performance

<b>Conjugation</b>	Unconjugated
<b>Modification</b>	Unmodified
<b>Isotype</b>	IgG
<b>Clonality</b>	Polyclonal
<b>Form</b>	Liquid
<b>Storage</b>	Store at 4°C short term. Aliquot and store at -20°C long term. Avoid freeze/thaw cycles.
<b>Buffer</b>	Liquid in PBS containing 50% glycerol, 0.5% BSA and 0.02% New type preservative N.
<b>Purification</b>	Affinity purification

## Immunogen

<b>Gene Name</b>	CCL24 MPIF2 SCYA24
<b>Alternative Names</b>	C-C motif chemokine 24 (CK-beta-6;Eosinophil chemotactic protein 2;Eotaxin-2;Myeloid progenitor inhibitory factor 2;MPIF-2;Small-inducible cytokine A24)
<b>Gene ID</b>	6369.0
<b>SwissProt ID</b>	O00175.Synthetic peptide from human protein at AA range: 61-110

## Application

<b>Dilution Ratio</b>	IHC-p 1:50-200, ELISA 1:10000-20000.
<b>Molecular Weight</b>	

## Background

---

**Product Name: Eotaxin-2 Rabbit Polyclonal Antibody**  
**Catalog #: APRab10489**

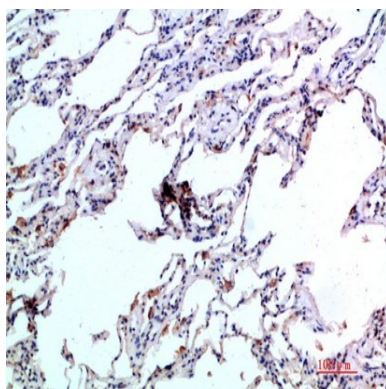


This gene belongs to the subfamily of small cytokine CC genes. Cytokines are a family of secreted proteins involved in immunoregulatory and inflammatory processes. The CC cytokines are proteins characterized by two adjacent cysteines. The cytokine encoded by this gene displays chemotactic activity on resting T lymphocytes, a minimal activity on neutrophils, and is negative on monocytes and activated T lymphocytes. The protein is also a strong suppressor of colony formation by a multipotential hematopoietic progenitor cell line. [provided by RefSeq, Jul 2008],function:Chemotactic for resting T-lymphocytes, and eosinophils. Has lower chemotactic activity for neutrophils but none for monocytes and activated lymphocytes. Is a strong suppressor of colony formation by a multipotential hematopoietic progenitor cell line. Binds to CCR3.,online information:CCL24 entry,PTM:N-glycosylated.,similarity:Belongs to the intercrine beta (chemokine CC) family.,tissue specificity:Activated monocytes and activated T lymphocytes.,

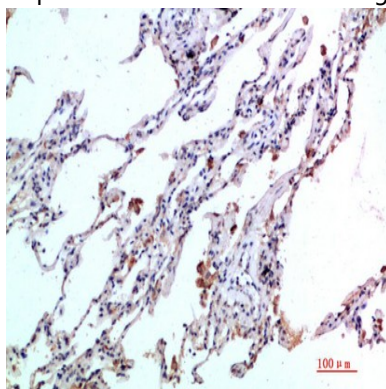
## Research Area

Cytokine-cytokine receptor interaction;Chemokine;

## Image Data



Immunohistochemical analysis of paraffin-embedded human-lung, antibody was diluted at 1:200



Immunohistochemical analysis of paraffin-embedded human-lung, antibody was diluted at 1:200

## Note

For research use only.

**Product Name: Eotaxin-2 Rabbit Polyclonal Antibody**  
**Catalog #: APRab10489**

---

