

## Summary

<b>Production Name</b>	Eotaxin Rabbit Polyclonal Antibody
<b>Description</b>	Rabbit Polyclonal Antibody
<b>Host</b>	Rabbit
<b>Application</b>	WB
<b>Reactivity</b>	Human,Mouse,Rat

## Performance

<b>Conjugation</b>	Unconjugated
<b>Modification</b>	Unmodified
<b>Isotype</b>	IgG
<b>Clonality</b>	Polyclonal
<b>Form</b>	Liquid
<b>Storage</b>	Store at 4°C short term. Aliquot and store at -20°C long term. Avoid freeze/thaw cycles.
<b>Buffer</b>	Liquid in PBS containing 50% glycerol, 0.5% BSA and 0.02% New type preservative N.
<b>Purification</b>	Affinity purification

## Immunogen

<b>Gene Name</b>	CCL11
<b>Alternative Names</b>	CCL11; SCYA11; Eotaxin; C-C motif chemokine 11; Eosinophil chemotactic protein; Small-inducible cytokine A11
<b>Gene ID</b>	6356.0
<b>SwissProt ID</b>	P51671.The antiserum was produced against synthesized peptide derived from the Internal region of human CCL11. AA range:41-90

## Application

<b>Dilution Ratio</b>	WB 1:500-1:2000. ELISA: 1:20000.
<b>Molecular Weight</b>	11kD

## Background

**Product Name: Eotaxin Rabbit Polyclonal Antibody**  
**Catalog #: APRab10488**

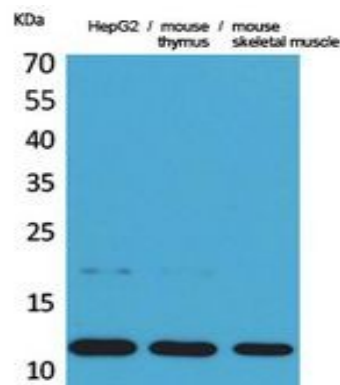


This antimicrobial gene is one of several chemokine genes clustered on the q-arm of chromosome 17. Chemokines form a superfamily of secreted proteins involved in immunoregulatory and inflammatory processes. The superfamily is divided into four subfamilies based on the arrangement of the N-terminal cysteine residues of the mature peptide. This chemokine, a member of the CC subfamily, displays chemotactic activity for eosinophils, but not mononuclear cells or neutrophils. This eosinophil-specific chemokine is thought to be involved in eosinophilic inflammatory diseases such as atopic dermatitis, allergic rhinitis, asthma and parasitic infections. [provided by RefSeq, Sep 2014],function:In response to the presence of allergens, this protein directly promotes the accumulation of eosinophils, a prominent feature of allergic inflammatory reactions. Binds to CCR3.,induction:By TNF-alpha, interleukin-1 alpha and interferon gamma.,online information:CCL11 entry,PTM:O-linked glycan consists of a Gal-GalNAc disaccharide which is modified with up to 2 sialic acid residues.,similarity:Belongs to the intercrine beta (chemokine CC) family.,

## Research Area

Cytokine-cytokine receptor interaction;Chemokine;NOD-like receptor;Asthma;

## Image Data



Western Blot analysis of HepG2, mouse thymus, mouse skeletal muscle cells using Eotaxin Polyclonal Antibody.. Secondary antibody was diluted at 1:20000

## Note

For research use only.