

Product Name: Endophilin B2 Rabbit Polyclonal Antibody
Catalog #: APRab10466

Summary

Production Name	Endophilin B2 Rabbit Polyclonal Antibody
Description	Rabbit Polyclonal Antibody
Host	Rabbit
Application	IHC,WB,ELISA
Reactivity	Human,Mouse,Rat,Monkey

Performance

Conjugation	Unconjugated
Modification	Unmodified
Isotype	IgG
Clonality	Polyclonal
Form	Liquid
Storage	Store at 4°C short term. Aliquot and store at -20°C long term. Avoid freeze/thaw cycles.
Buffer	Liquid in PBS containing 50% glycerol, 0.5% BSA and 0.02% New type preservative N.
Purification	Affinity purification

Immunogen

Gene Name	SH3GLB2
Alternative Names	SH3GLB2; KIAA1848; PP578; Endophilin-B2; SH3 domain-containing GRB2-like protein B2
Gene ID	56904.0
SwissProt ID	Q9NR46.The antiserum was produced against synthesized peptide derived from human SH3GLB2. AA range:131-180

Application

Dilution Ratio	WB 1:500 - 1:2000. IHC 1:100 - 1:300. ELISA: 1:40000..
Molecular Weight	48kD

Product Name: Endophilin B2 Rabbit Polyclonal Antibody
Catalog #: APRab10466

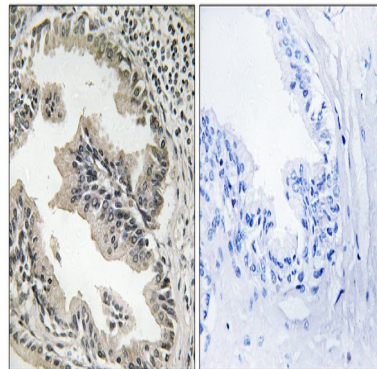
Background

similarity:Belongs to the endophilin family.,similarity:Contains 1 BAR domain.,similarity:Contains 1 SH3 domain.,subunit:Homodimer, and heterodimer with SH3GLB1.,tissue specificity:Detected in skeletal muscle, adipocyte, brain, lung, colon and mammary gland.,similarity:Belongs to the endophilin family.,similarity:Contains 1 BAR domain.,similarity:Contains 1 SH3 domain.,subunit:Homodimer, and heterodimer with SH3GLB1.,tissue specificity:Detected in skeletal muscle, adipocyte, brain, lung, colon and mammary gland.,

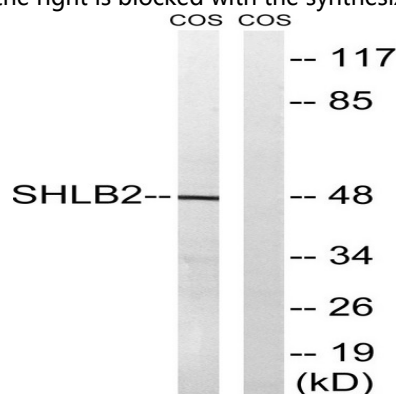
Research Area

Endocytosis;

Image Data

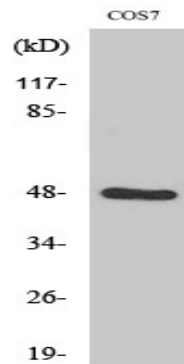


Immunohistochemistry analysis of paraffin-embedded human prostate carcinoma tissue, using SH3GLB2 Antibody. The picture on the right is blocked with the synthesized peptide.



Western blot analysis of lysates from COS7 cells, using SH3GLB2 Antibody. The lane on the right is blocked with the synthesized peptide.

Product Name: Endophilin B2 Rabbit Polyclonal Antibody
Catalog #: APRab10466



Western Blot analysis of various cells using Endophilin B2 Polyclonal Antibody diluted at 1: 1000

Note

For research use only.