

Summary

Production Name	ENDD1 Rabbit Polyclonal Antibody
Description	Rabbit Polyclonal Antibody
Host	Rabbit
Application	WB
Reactivity	Human,Mouse

Performance

Conjugation	Unconjugated
Modification	Unmodified
Isotype	IgG
Clonality	Polyclonal
Form	Liquid
Storage	Store at 4°C short term. Aliquot and store at -20°C long term. Avoid freeze/thaw cycles.
Buffer	Liquid in PBS containing 50% glycerol, and 0.02% New type preservative N.
Purification	Affinity purification

Immunogen

Gene Name	ENDOD1 KIAA0830
Alternative Names	
Gene ID	23052.0
SwissProt ID	O94919.Synthesized peptide derived from part region of human protein

Application

Dilution Ratio	WB 1:500-2000 ELISA 1:5000-20000
Molecular Weight	55kD

Background

function:May act as a DNase and a RNase .,similarity:Belongs to the DNA/RNA non-specific endonuclease family.,function:May act as a DNase and a RNase .,similarity:Belongs to the DNA/RNA non-specific endonuclease family.,

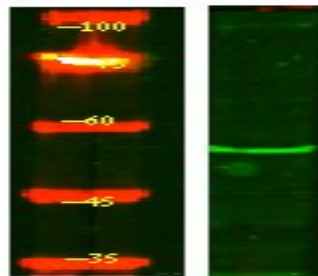
Product Name: ENDD1 Rabbit Polyclonal Antibody
Catalog #: APRab10458



Research Area

Apoptosis_Inhibition;Apoptosis_Mitochondrial;Apoptosis_Overview;

Image Data



Western Blot analysis of HEK293 lysis, using primary antibody at 1:1000 dilution. Secondary antibody was diluted at 1:10000

Note

For research use only.