

Product Name: Encephalopsin Rabbit Polyclonal Antibody
Catalog #: APRab10457

Summary

| | |
|------------------------|--|
| Production Name | Encephalopsin Rabbit Polyclonal Antibody |
| Description | Rabbit Polyclonal Antibody |
| Host | Rabbit |
| Application | IF, WB, ELISA |
| Reactivity | Human, Mouse |

Performance

| | |
|---------------------|--|
| Conjugation | Unconjugated |
| Modification | Unmodified |
| Isotype | IgG |
| Clonality | Polyclonal |
| Form | Liquid |
| Storage | Store at 4°C short term. Aliquot and store at -20°C long term. Avoid freeze/thaw cycles. |
| Buffer | Liquid in PBS containing 50% glycerol, 0.5% BSA and 0.02% New type preservative N. |
| Purification | Affinity purification |

Immunogen

| | |
|--------------------------|--|
| Gene Name | OPN3 |
| Alternative Names | OPN3; ECPN; Opsin-3; Encephalopsin; Panopsin |
| Gene ID | 23596.0 |
| SwissProt ID | Q9H1Y3. The antiserum was produced against synthesized peptide derived from human Encephalopsin. AA range: 161-210 |

Application

| | |
|-------------------------|--|
| Dilution Ratio | WB 1:500 - 1:2000. IF 1:200 - 1:1000. ELISA: 1:5000. Not yet tested in other applications. |
| Molecular Weight | 45kD |

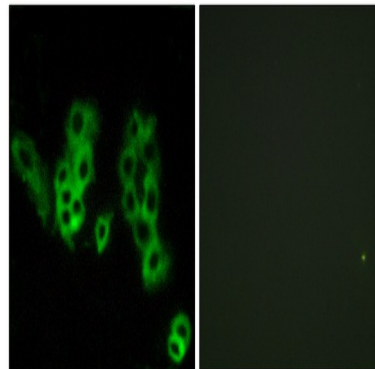
Product Name: Encephalopsin Rabbit Polyclonal Antibody
Catalog #: APRab10457

Background

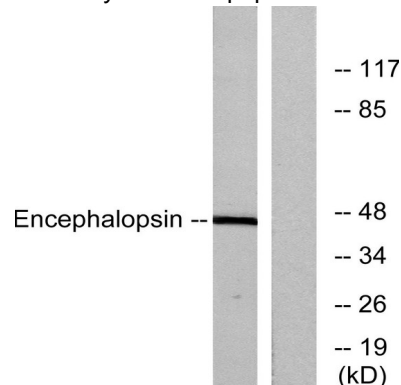
Opsins are members of the guanine nucleotide-binding protein (G protein)-coupled receptor superfamily. In addition to the visual opsins, mammals possess several photoreceptive non-visual opsins that are expressed in extraocular tissues. This gene, opsin 3, is strongly expressed in brain and testis and weakly expressed in liver, placenta, heart, lung, skeletal muscle, kidney, and pancreas. The gene may also be expressed in the retina. The protein has the canonical features of a photoreceptive opsin protein. [provided by RefSeq, Jul 2008],function:May play a role in encephalic photoreception.,similarity:Belongs to the G-protein coupled receptor 1 family.,similarity:Belongs to the G-protein coupled receptor 1 family. Opsin subfamily.,tissue specificity:Strongly expressed in brain. Highly expressed in the preoptic area and paraventricular nucleus of the hypothalamus. Shows highly patterned expression in other regions of the brain, being enriched in selected regions of the cerebral cortex, cerebellar Purkinje cells, a subset of striatal neurons, selected thalamic nuclei, and a subset of interneurons in the ventral horn of the spinal cord.,

Research Area

Image Data

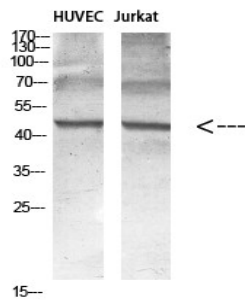


Immunofluorescence analysis of MCF7 cells, using Encephalopsin Antibody. The picture on the right is blocked with the synthesized peptide.



Product Name: Encephalopsin Rabbit Polyclonal Antibody
Catalog #: APRab10457

Western blot analysis of lysates from mouse brain, using Encephalopsin Antibody. The lane on the right is blocked with the synthesized peptide.



Western blot analysis of various cell Lysate, antibody was diluted at 1:1000. Secondary antibody was diluted at 1:20000

Note

For research use only.