
Summary

Production Name	ENaC γ Rabbit Polyclonal Antibody
Description	Rabbit Polyclonal Antibody
Host	Rabbit
Application	WB,ELISA
Reactivity	Human,Mouse,Rat

Performance

Conjugation	Unconjugated
Modification	Unmodified
Isotype	IgG
Clonality	Polyclonal
Form	Liquid
Storage	Store at 4°C short term. Aliquot and store at -20°C long term. Avoid freeze/thaw cycles.
Buffer	Liquid in PBS containing 50% glycerol, 0.5% BSA and 0.02% New type preservative N.
Purification	Affinity purification

Immunogen

Gene Name	SCNN1G SCNN1G; Amiloride-sensitive sodium channel subunit gamma; Epithelial Na(+) channel
Alternative Names	subunit gamma; ENaCG; Gamma-ENaC; Gamma-NaCH; Nonvoltage-gated sodium channel 1 subunit gamma; SCNEG
Gene ID	6340.0
SwissProt ID	P51170.The antiserum was produced against synthesized peptide derived from human ENaC gamma. AA range:132-181

Application

Dilution Ratio	WB 1:500 - 1:2000. ELISA: 1:20000
Molecular Weight	80kD

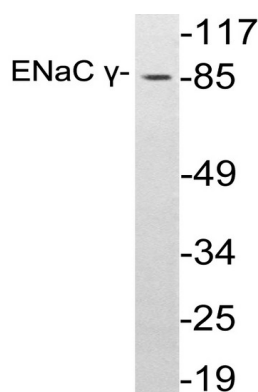
Background

Nonvoltage-gated, amiloride-sensitive, sodium channels control fluid and electrolyte transport across epithelia in many organs. These channels are heteromeric complexes consisting of 3 subunits: alpha, beta, and gamma. This gene encodes the gamma subunit, and mutations in this gene have been associated with Liddle syndrome. [provided by RefSeq, Apr 2009],disease:Defects in SCNN1G are a cause of Liddle syndrome [MIM:177200]. It is an autosomal dominant disorder characterized by pseudoaldosteronism and hypertension associated with hypokalemic alkalosis. The disease is caused by constitutive activation of the renal epithelial sodium channel.,function:Sodium permeable non-voltage-sensitive ion channel inhibited by the diuretic amiloride. Mediates the electrodiffusion of the luminal sodium (and water, which follows osmotically) through the apical membrane of epithelial cells. Controls the reabsorption of sodium in kidney, colon, lung and sweat glands. Also plays a role in taste perception.,PTM:Phosphorylated on serine and threonine residues.,PTM:Ubiquitinated; this targets individual subunits for endocytosis and proteasome-mediated degradation.,similarity:Belongs to the amiloride-sensitive sodium channel family.,subcellular location:Apical membrane of epithelial cells.,subunit:Heterotetramer of two alpha, one beta and one gamma subunit. A delta subunit can replace the alpha subunit. Interacts with the WW domains of NEDD4, NEDD4L, WWP1 and WWP2.,

Research Area

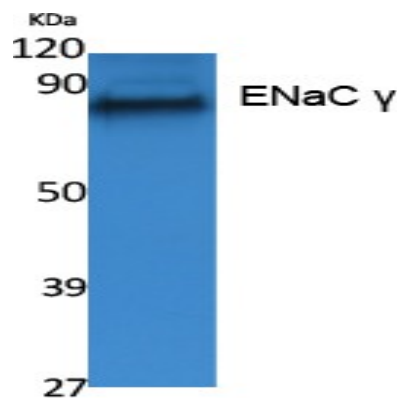
Taste transduction;Aldosterone-regulated sodium reabsorption;

Image Data



Western blot analysis of lysates from A549 cells, using ENaC γ antibody.

Product Name: ENaC γ Rabbit Polyclonal Antibody
Catalog #: APRab10454



Western Blot analysis of extracts from A549 cells, using ENaC γ Polyclonal Antibody. Antibody was diluted at 1:500.
Secondary antibody was diluted at 1:20000

Note

For research use only.