

Product Name: EMR3 Rabbit Polyclonal Antibody
Catalog #: APRab10448



Summary

Production Name	EMR3 Rabbit Polyclonal Antibody
Description	Rabbit Polyclonal Antibody
Host	Rabbit
Application	WB
Reactivity	Human,Rat,Mouse

Performance

Conjugation	Unconjugated
Modification	Unmodified
Isotype	IgG
Clonality	Polyclonal
Form	Liquid
Storage	Store at 4°C short term. Aliquot and store at -20°C long term. Avoid freeze/thaw cycles.
Buffer	Liquid in PBS containing 50% glycerol, 0.5% BSA and 0.02% New type preservative N.
Purification	Affinity purification

Immunogen

Gene Name	EMR3
Alternative Names	EMR3; EGF-like module-containing mucin-like hormone receptor-like 3; EGF-like module receptor 3
Gene ID	84658.0
SwissProt ID	Q9BY15.The antiserum was produced against synthesized peptide derived from human EMR3. AA range:603-652

Application

Dilution Ratio	WB 1:500-1:2000. ELISA: 1:10000.
Molecular Weight	70kD

Background

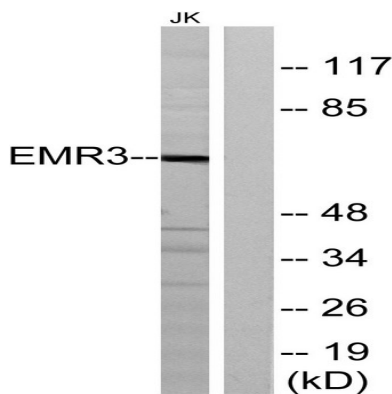
Product Name: EMR3 Rabbit Polyclonal Antibody
Catalog #: APRab10448



This gene encodes a member of the class B seven-span transmembrane (TM7) receptor family expressed predominantly by cells of the immune system. Family members are characterized by an extended extracellular region with a variable number of N-terminal epidermal growth factor (EGF)-like domains coupled to a TM7 domain via a mucin-like spacer domain. This gene is closely linked to the gene encoding egf-like molecule containing mucin-like hormone receptor 2 on chromosome 19. This protein may play a role in myeloid-myeloid interactions during immune and inflammatory responses. Alternative splicing results in multiple transcript variants encoding different isoforms. [provided by RefSeq, Jan 2014],function:Receptor probably involved in myeloid interactions during immune and inflammatory responses. A ligand for the soluble form of this receptor is present at the surface of monocytes-derived macrophages and activated neutrophils.,PTM:Proteolytically cleaved into 2 subunits, an extracellular alpha subunit and a seven-transmembrane subunit.,similarity:Belongs to the G-protein coupled receptor 2 family. LN-TM7 subfamily.,similarity:Contains 1 GPS domain.,similarity:Contains 2 EGF-like domains.,subcellular location:A soluble form is also detected (alpha subunit),subunit:Forms a heterodimer, consisting of a large extracellular region (alpha subunit) non-covalently linked to a seven-transmembrane moiety (beta subunit),tissue specificity:Displays a predominantly leukocyte-restricted expression, with highest levels in neutrophils, monocytes and macrophages.,

Research Area

Image Data



Western blot analysis of lysates from Jurkat cells, using EMR3 Antibody. The lane on the right is blocked with the synthesized peptide.

Note

For research use only.