

Summary

Production Name	ELOVL6 Rabbit Polyclonal Antibody
Description	Rabbit Polyclonal Antibody
Host	Rabbit
Application	WB,ELISA
Reactivity	Human,Mouse,Rat

Performance

Conjugation	Unconjugated
Modification	Unmodified
Isotype	IgG
Clonality	Polyclonal
Form	Liquid
Storage	Store at 4°C short term. Aliquot and store at -20°C long term. Avoid freeze/thaw cycles.
Buffer	Liquid in PBS containing 50% glycerol, 0.5% BSA and 0.02% New type preservative N.
Purification	Affinity purification

Immunogen

Gene Name	ELOVL6
Alternative Names	ELOVL6; FACE; LCE; Elongation of very long chain fatty acids protein 6; 3-keto acyl-CoA synthase ELOVL6; ELOVL fatty acid elongase 6; ELOVL FA elongase 6; Fatty acid elongase 2; hELO2; Fatty acyl-CoA elongase; Long-chain fatty-acyl elongase
Gene ID	79071.0
SwissProt ID	Q9H5J4.The antiserum was produced against synthesized peptide derived from human ELOVL6. AA range:21-70

Application

Dilution Ratio	WB 1:500 - 1:2000. ELISA: 1:10000
Molecular Weight	35kD

Product Name: ELOVL6 Rabbit Polyclonal Antibody
Catalog #: APRab10428



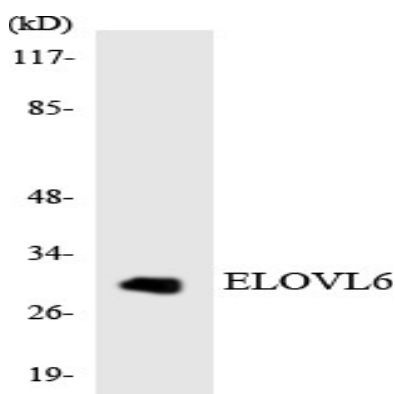
Background

Fatty acid elongases (EC 6.2.1.3), such as ELOVL6, use malonyl-CoA as a 2-carbon donor in the first and rate-limiting step of fatty acid elongation (Moon et al., 2001 [PubMed 11567032]).[supplied by OMIM, Mar 2008],function:Fatty acid elongase specific to C12-C16 saturated and monoinsaturated fatty acids.,similarity:Belongs to the ELO family.,

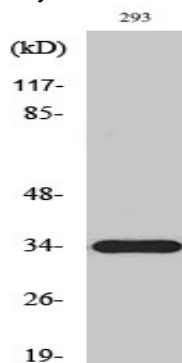
Research Area

Biosynthesis of unsaturated fatty acids;

Image Data



Western blot analysis of the lysates from K562 cells using ELOVL6 antibody.



Western Blot analysis of various cells using ELOVL6 Polyclonal Antibody

Note

For research use only.