

Product Name: ELOVL5 Rabbit Polyclonal Antibody
Catalog #: APRab10427



Summary

Production Name	ELOVL5 Rabbit Polyclonal Antibody
Description	Rabbit Polyclonal Antibody
Host	Rabbit
Application	WB,IHC,ELISA
Reactivity	Human,Rat,Mouse

Performance

Conjugation	Unconjugated
Modification	Unmodified
Isotype	IgG
Clonality	Polyclonal
Form	Liquid
Storage	Store at 4°C short term. Aliquot and store at -20°C long term. Avoid freeze/thaw cycles.
Buffer	Liquid in PBS containing 50% glycerol, 0.5% BSA and 0.02% New type preservative N.
Purification	Affinity purification

Immunogen

Gene Name	ELOVL5
Alternative Names	ELOVL5; ELOVL2; Elongation of very long chain fatty acids protein 5; 3-keto acyl-CoA synthase ELOVL5; ELOVL fatty acid elongase 5; ELOVL FA elongase 5; Fatty acid elongase 1; hELO1
Gene ID	60481.0
SwissProt ID	Q9NYP7.The antiserum was produced against synthesized peptide derived from human ELOVL5. AA range:250-299

Application

Dilution Ratio	WB 1:500 - 1:2000. IHC 1:100 - 1:300. ELISA: 1:40000..
Molecular Weight	28kD

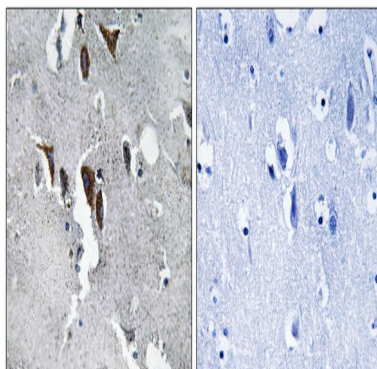
Background

This gene belongs to the ELO family. It is highly expressed in the adrenal gland and testis, and encodes a multi-pass membrane protein that is localized in the endoplasmic reticulum. This protein is involved in the elongation of long-chain polyunsaturated fatty acids. Mutations in this gene have been associated with spinocerebellar ataxia-38 (SCA38). Alternatively spliced transcript variants have been found for this gene. [provided by RefSeq, Sep 2014],function:May be involved in the elongation of long-chain polyunsaturated fatty acids (PUFAs),similarity:Belongs to the ELO family,,tissue specificity:Highly expressed in the adrenal gland and testis. Weekly expressed in prostate, lung and brain.,

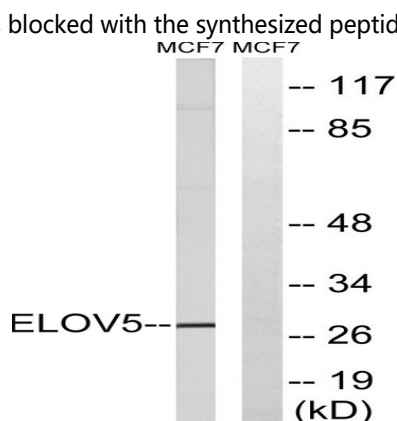
Research Area

Biosynthesis of unsaturated fatty acids;

Image Data



Immunohistochemistry analysis of paraffin-embedded human brain tissue, using ELOVL5 Antibody. The picture on the right is blocked with the synthesized peptide.



Western blot analysis of lysates from MCF-7 cells, using ELOVL5 Antibody. The lane on the right is blocked with the synthesized peptide.

Product Name: ELOVL5 Rabbit Polyclonal Antibody
Catalog #: APRab10427



Note

For research use only.