
Summary

Production Name	Elf-1 Rabbit Polyclonal Antibody
Description	Rabbit Polyclonal Antibody
Host	Rabbit
Application	IF, WB, ELISA
Reactivity	Human

Performance

Conjugation	Unconjugated
Modification	Unmodified
Isotype	IgG
Clonality	Polyclonal
Form	Liquid
Storage	Store at 4°C short term. Aliquot and store at -20°C long term. Avoid freeze/thaw cycles.
Buffer	Liquid in PBS containing 50% glycerol, 0.5% BSA and 0.02% New type preservative N.
Purification	Affinity purification

Immunogen

Gene Name	ELF1
Alternative Names	ELF1; ETS-related transcription factor Elf-1; E74-like factor 1
Gene ID	1997.0
SwissProt ID	P32519. The antiserum was produced against synthesized peptide derived from human ELF1. AA range: 537-586

Application

Dilution Ratio	WB 1:500 - 1:2000. IF 1:200 - 1:1000. ELISA: 1:20000. Not yet tested in other applications.
Molecular Weight	67kD

Product Name: Elf-1 Rabbit Polyclonal Antibody
Catalog #: APRab10400

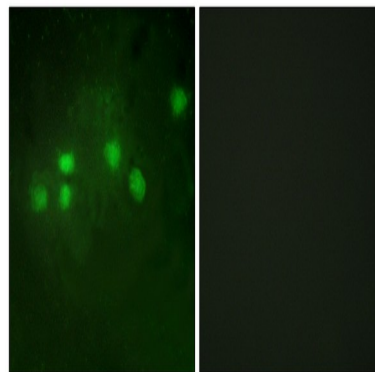


Background

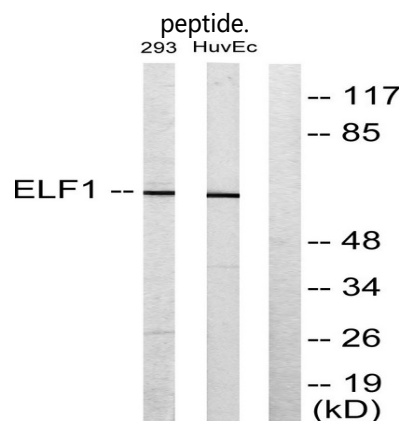
This gene encodes an E26 transformation-specific related transcription factor. The encoded protein is primarily expressed in lymphoid cells and acts as both an enhancer and a repressor to regulate transcription of various genes. Alternative splicing results in multiple transcript variants. [provided by RefSeq, Feb 2009],function:Transcription factor that activates the LYN and BLK promoters. Appears to be required for the T-cell-receptor-mediated trans activation of HIV-2 gene expression. Binds specifically to two purine-rich motifs in the HIV-2 enhancer.,PTM:Phosphorylated upon DNA damage, probably by ATM or ATR.,similarity:Belongs to the ETS family.,similarity:Contains 1 ETS DNA-binding domain.,subunit:Binds to the underphosphorylated form of RB. May interact with other transcription factors in order to regulate specific genes. Interacts with RUNX1.,tissue specificity:In fetal tissue, it is highly expressed in heart, lung liver and kidney, and weakly expressed in brain. In adult, it is highly expressed in pancreas, spleen, thymus and peripheral blood leukocytes, expressed at moderate levels in heart, placenta, lung, liver, skeletal muscle, kidney, prostate, ovary, small intestine and colon, and weakly expressed in brain and testis.,

Research Area

Image Data



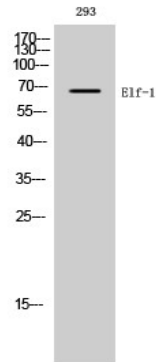
Immunofluorescence analysis of A549 cells, using ELF1 Antibody. The picture on the right is blocked with the synthesized



Product Name: Elf-1 Rabbit Polyclonal Antibody
Catalog #: APRab10400



Western blot analysis of lysates from 293 and HUVEC cells, using ELF1 Antibody. The lane on the right is blocked with the synthesized peptide.



Western Blot analysis of 293 cells using Elf-1 Polyclonal Antibody diluted at 1: 1000

Note

For research use only.