

Product Name: EKLF/CKLF/UKLF Rabbit Polyclonal Antibody
Catalog #: APRab10397



Summary

Production Name	EKLF/CKLF/UKLF Rabbit Polyclonal Antibody
Description	Rabbit Polyclonal Antibody
Host	Rabbit
Application	WB,
Reactivity	Human,Mouse,Rat

Performance

Conjugation	Unconjugated
Modification	Unmodified
Isotype	IgG
Clonality	Polyclonal
Form	Liquid
Storage	Store at 4°C short term. Aliquot and store at -20°C long term. Avoid freeze/thaw cycles.
Buffer	Liquid in PBS containing 50% glycerol, 0.5% BSA and 0.02% New type preservative N.
Purification	Affinity purification

Immunogen

Gene Name	KLF1/KLF5/KLF7 KLF1; EKLF; Krueppel-like factor 1; Erythroid krueppel-like transcription factor; EKLF;
Alternative Names	KLF5; BTEB2; CKLF; IKLF; Krueppel-like factor 5; Basic transcription element-binding protein 2; BTE-binding protein 2; Colon krueppel-like factor; GC-bo
Gene ID	10661/688/8609
SwissProt ID	Q13351/Q13887/O75840.The antiserum was produced against synthesized peptide derived from human KLF. AA range:291-340

Application

Dilution Ratio	WB 1:500 - 1:2000. ELISA: 1:20000. Not yet tested in other applications.
Molecular Weight	38kD(EKLF) 20kD(CKLF/UKLF)

Product Name: EKLF/CKLF/UKLF Rabbit Polyclonal Antibody
Catalog #: APRab10397



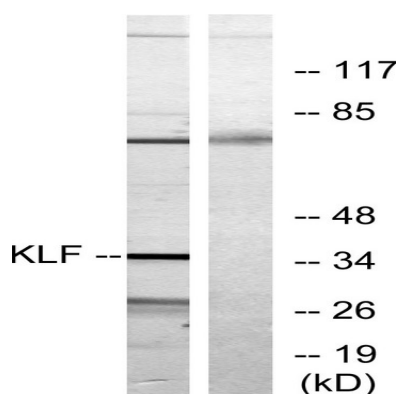
Background

This gene encodes a hematopoietic-specific transcription factor that induces high-level expression of adult beta-globin and other erythroid genes. The zinc-finger protein binds to the DNA sequence CCACACCCT found in the beta hemoglobin promoter. Heterozygous loss-of-function mutations in this gene result in the dominant In(Lu) blood phenotype. [provided by RefSeq, Oct 2009],function:Transcription regulator of erythrocyte development. Binds to the CACCC box in the beta-globin gene promoter and activates transcription. When sumoylation, acts as a Probably serves as a general switch factor for erythroid development. When sumoylated, acts as a transcriptional repressor, by promoting interaction with CDH2/MI2beta and also represses megakaryocytic differentiation.,PTM:Acetylated; can be acetylated on both Lys-274 and Lys-288. Acetylation on Lys-274 (by CBP) appears to be the major site affecting EKLK transactivation activity.,PTM:Phosphorylated primarily on serine residues in the transactivation domain. Phosphorylation on Thr-23 is critical for the transactivation activity.,PTM:Sumoylated; sumoylation, promoted by PIAS1, leads to repression of megakaryocyte differentiation. Also promotes the interaction with the CDH4 subunit of the NuRD repression complex.,similarity:Belongs to the krueppel C2H2-type zinc-finger protein family.,similarity:Contains 3 C2H2-type zinc fingers.,subcellular location:Colocalizes with SUMO1 in nuclear speckles.,subunit:Interacts with CBP and EP300; the interactions enhance the transactivation activity. Interacts with PCAF; the interaction does not acetylate EKLK and inhibits its transactivation activity.,tissue specificity:Expression restricted to adult bone marrow and fetal liver. Not expressed in myeloid nor lymphoid cell lines.,

Research Area

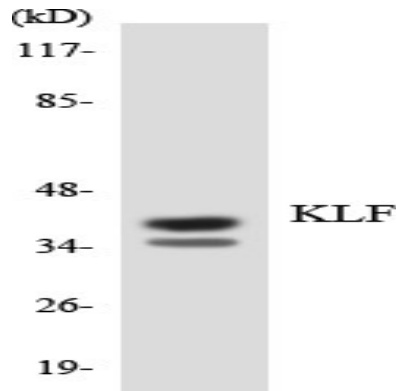
Protein_Acetylation

Image Data

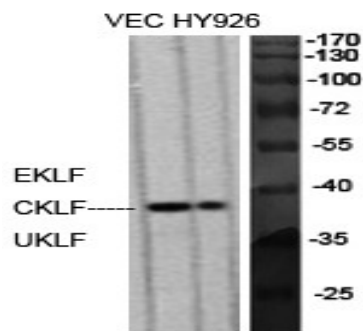


Western blot analysis of lysates from Jurkat cells, treated with serum 20% 15', using KLF Antibody. The lane on the right is blocked with the synthesized peptide.

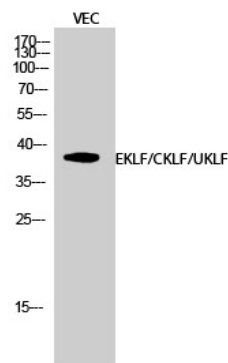
Product Name: EKLF/CKLF/UKLF Rabbit Polyclonal Antibody
Catalog #: APRab10397



Western blot analysis of the lysates from K562 cells using KLF antibody.



Western Blot analysis of various cells using EKLF/CKLF/UKLF Polyclonal Antibody diluted at 1 : 500 cells nucleus extracted by Minute TM Cytoplasmic and Nuclear Fractionation kit (SC-003, Inventbiotech, MN, USA) .



Western Blot analysis of VEC cells using EKLF/CKLF/UKLF Polyclonal Antibody diluted at 1 : 500 cells nucleus extracted by Minute TM Cytoplasmic and Nuclear Fractionation kit (SC-003, Inventbiotech, MN, USA) .

Note

For research use only.