
Summary

Production Name	EKLF Rabbit Polyclonal Antibody
Description	Rabbit Polyclonal Antibody
Host	Rabbit
Application	WB,ELISA
Reactivity	Human,Rat,Mouse

Performance

Conjugation	Unconjugated
Modification	Unmodified
Isotype	IgG
Clonality	Polyclonal
Form	Liquid
Storage	Store at 4°C short term. Aliquot and store at -20°C long term. Avoid freeze/thaw cycles.
Buffer	Liquid in PBS containing 50% glycerol, 0.5% BSA and 0.02% New type preservative N.
Purification	Affinity purification

Immunogen

Gene Name	KLF1
Alternative Names	KLF1; EKLF; Krueppel-like factor 1; Erythroid krueppel-like transcription factor; EKLF
Gene ID	10661.0
SwissProt ID	Q13351.The antiserum was produced against synthesized peptide derived from human KLF1 around the non-acetylation site of Lys274. AA range:231-280

Application

Dilution Ratio	WB 1:500 - 1:2000. ELISA: 1:20000
Molecular Weight	38kD

Background

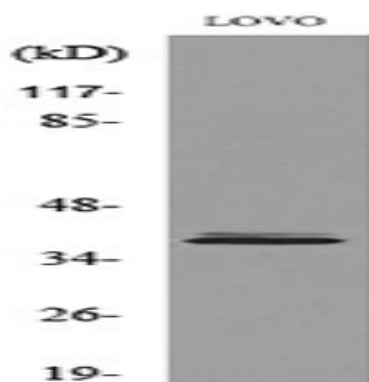
Product Name: EKLF Rabbit Polyclonal Antibody
Catalog #: APRab10396



This gene encodes a hematopoietic-specific transcription factor that induces high-level expression of adult beta-globin and other erythroid genes. The zinc-finger protein binds to the DNA sequence CCACACCCT found in the beta hemoglobin promoter. Heterozygous loss-of-function mutations in this gene result in the dominant In(Lu) blood phenotype. [provided by RefSeq, Oct 2009],function:Transcription regulator of erythrocyte development. Binds to the CACCC box in the beta-globin gene promoter and activates transcription. When sumoylation, acts as a Probably serves as a general switch factor for erythroid development. When sumoylated, acts as a transcriptional repressor, by promoting interaction with CDH2/Mi2beta and also represses megakaryocytic differentiation.,PTM:Acetylated; can be acetylated on both Lys-274 and Lys-288. Acetylation on Lys-274 (by CBP) appears to be the major site affecting EKLF transactivation activity.,PTM:Phosphorylated primarily on serine residues in the transactivation domain. Phosphorylation on Thr-23 is critical for the transactivation activity.,PTM:Sumoylated; sumoylation, promoted by PIAS1, leads to repression of megakaryocyte differentiation. Also promotes the interaction with the CDH4 subunit of the NuRD repression complex.,similarity:Belongs to the krueppel C2H2-type zinc-finger protein family.,similarity:Contains 3 C2H2-type zinc fingers.,subcellular location:Colocalizes with SUMO1 in nuclear speckles.,subunit:Interacts with CBP and EP300; the interactions enhance the transactivation activity. Interacts with PCAF; the interaction does not acetylate EKLF and inhibits its transactivation activity.,tissue specificity:Expression restricted to adult bone marrow and fetal liver. Not expressed in myeloid nor lymphoid cell lines.,

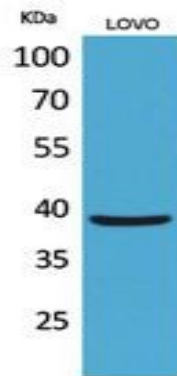
Research Area

Image Data



Western blot analysis of lysate from LOVO cells, using KLF1 Antibody.

Product Name: EKLF Rabbit Polyclonal Antibody
Catalog #: APRab10396



Western Blot analysis of LOVO cells using EKLF Polyclonal Antibody.. Secondary antibody was diluted at 1:20000 cells nucleus extracted by Minute TM Cytoplasmic and Nuclear Fractionation kit (SC-003, Inventbiotech, MN, USA) .

Note

For research use only.