

---

## Summary

<b>Production Name</b>	EGFL5 Rabbit Polyclonal Antibody
<b>Description</b>	Rabbit Polyclonal Antibody
<b>Host</b>	Rabbit
<b>Application</b>	WB,ELISA
<b>Reactivity</b>	Human,Mouse,Rat

## Performance

<b>Conjugation</b>	Unconjugated
<b>Modification</b>	Unmodified
<b>Isotype</b>	IgG
<b>Clonality</b>	Polyclonal
<b>Form</b>	Liquid
<b>Storage</b>	Store at 4°C short term. Aliquot and store at -20°C long term. Avoid freeze/thaw cycles.
<b>Buffer</b>	Liquid in PBS containing 50% glycerol, 0.5% BSA and 0.02% New type preservative N.
<b>Purification</b>	Affinity purification

## Immunogen

<b>Gene Name</b>	MEGF9 MEGF9; EGFL5; KIAA0818; Multiple epidermal growth factor-like domains protein 9;
<b>Alternative Names</b>	Multiple EGF-like domains protein 9; Epidermal growth factor-like protein 5; EGF-like protein 5
<b>Gene ID</b>	1955.0
<b>SwissProt ID</b>	Q9H1U4.The antiserum was produced against synthesized peptide derived from human MEGF9. AA range:383-432

## Application

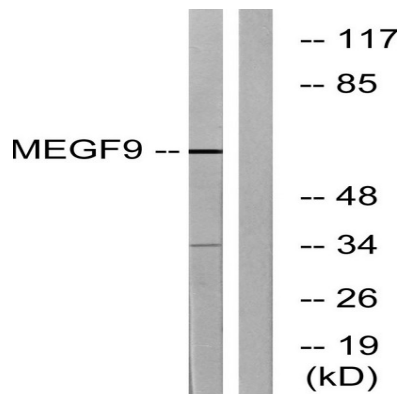
<b>Dilution Ratio</b>	WB 1:500 - 1:2000. ELISA: 1:40000.
<b>Molecular Weight</b>	63kD

## Background

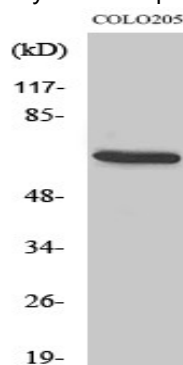
caution:It is uncertain whether Met-1 or Met-9 is the initiator.,polymorphism:The poly-Ala stretch (positions 24 to 31) may be polymorphic and varies from 6 to 8 Ala residues.,sequence caution:Intron retention.,similarity:Contains 5 laminin EGF-like domains.,caution:It is uncertain whether Met-1 or Met-9 is the initiator.,polymorphism:The poly-Ala stretch (positions 24 to 31) may be polymorphic and varies from 6 to 8 Ala residues.,sequence caution:Intron retention.,similarity:Contains 5 laminin EGF-like domains.,

## Research Area

## Image Data



Western blot analysis of lysates from COLO cells, using MEGF9 Antibody. The lane on the right is blocked with the synthesized peptide.



Western Blot analysis of various cells using EGFL5 Polyclonal Antibody diluted at 1: 500

## Note

For research use only.